

Configuration Guide

2024



GENESI®

Genesi LUX®

The best light for your vision

Tailor-made LED solutions
Lighting for machine vision



GENESI ELETTRONICA

WHO WE ARE OUR MISSION



Genesi Elettronica is an Italian company certified ISO 9001 with over 30 years of experience in the design and manufacturing of led lighting solutions and electronic boards.

Founded in 1991 by entrepreneurs Mauro Munari and Mario Rossi, the company was initially specialised in manufacturing customised electronic boards based on customer project.

In 2008, Genesi embarked on a new venture, establishing a dedicated facility to produce customised lighting solutions for a wide range of industries, including machine vision, pharmaceutical, automotive, packaging, food & beverage, labelling, sorting, tobacco and all areas of quality control.

At Genesi Elettronica, customer needs are at the forefront of everything we do.

This unwavering commitment to quality and innovation has propelled Genesi to the forefront of the customised lighting industry, establishing a strong presence in the international market.

HARDWARE ENGINEERING TEAM



SOFTWARE DEVELOPMENT TEAM



SMD ASSEMBLY



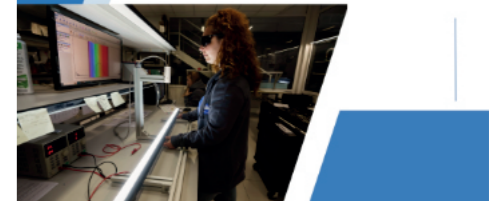
ELECTRONIC BOARDS MANUFACTURING



LED ILLUMINATORS MANUFACTURING



LED ILLUMINATORS TESTING AREA



LED LIGHTING R&D



SHOWROOM & TESTING ROOM



SALES DEPARTMENT



LOGISTICS



SUMMARY

1-2 *Configuration Guide*

Bar Lights

3-4 GEIL

5-6 GEILD

7-8 GEL

9-10 GEM

11-12 GEMB

13-14 GEMX4-X6

15-16 GEMPC

17-18 GEMHR

19-20 GEVA

Power Bar Lights

21-22 GP - GENESI POWER BAR **Blue Line***

23-24 GEVX

25-26 GEVXB

27-28 GEVXD

Ring Lights

29-30 GEST

31-32 GEST MEGA-RING **Blue Line***

Spot Lights

33-34 GES

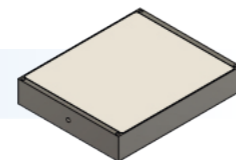
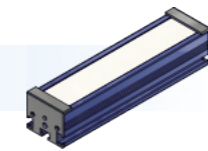
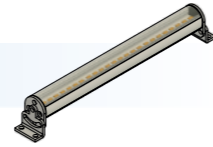
35-36 GS - GENESI SPOT **Blue Line***

Backlights

37-38 GERE

39-40 GH

41-42 GB - GENESI BACKLIGHT **Blue Line***



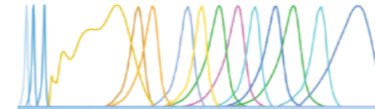
SUMMARY

Flat Dome Lights

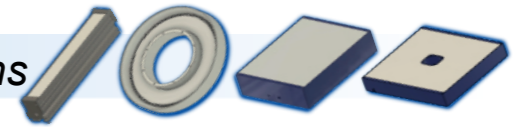
43-44 GERE

45-46 GF - GENESI FLAT DOME

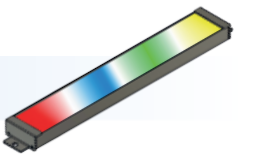
Blue Line*



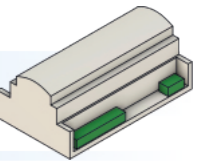
47-48 *Multispectral Lighting - 12 Wavelengths*



49-50 *Industrial Metric LED Bar*



51-52 *Controllers*

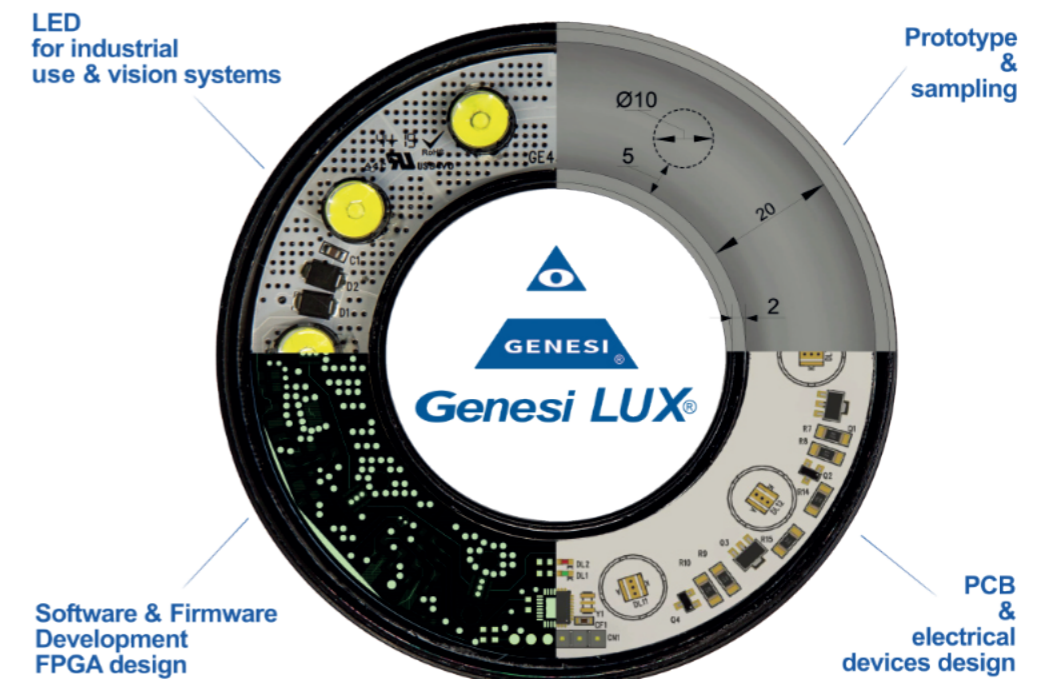


53-54 *Cables*

55-56 *Design Process & Tailor-made applications*

57-58 *Genesi Goes Green*

***Blue Line** - Internal controller with 4 Driving Modes



CONFIGURATION GUIDE

HOW TO CONFIGURE THE PRODUCT IN EVERY DETAIL

It is possible to choose among several lengths, colours, powers, fixings, covers and cables.

The **Base** configuration is more convenient and allows faster deliveries.

Example

Your Code: **GEIL42-6K-300-OP-M12S**



Ex. Code : **GEILXXX** - **YYY** - **CCC** - **WW1** - **WW2** - **WW3**

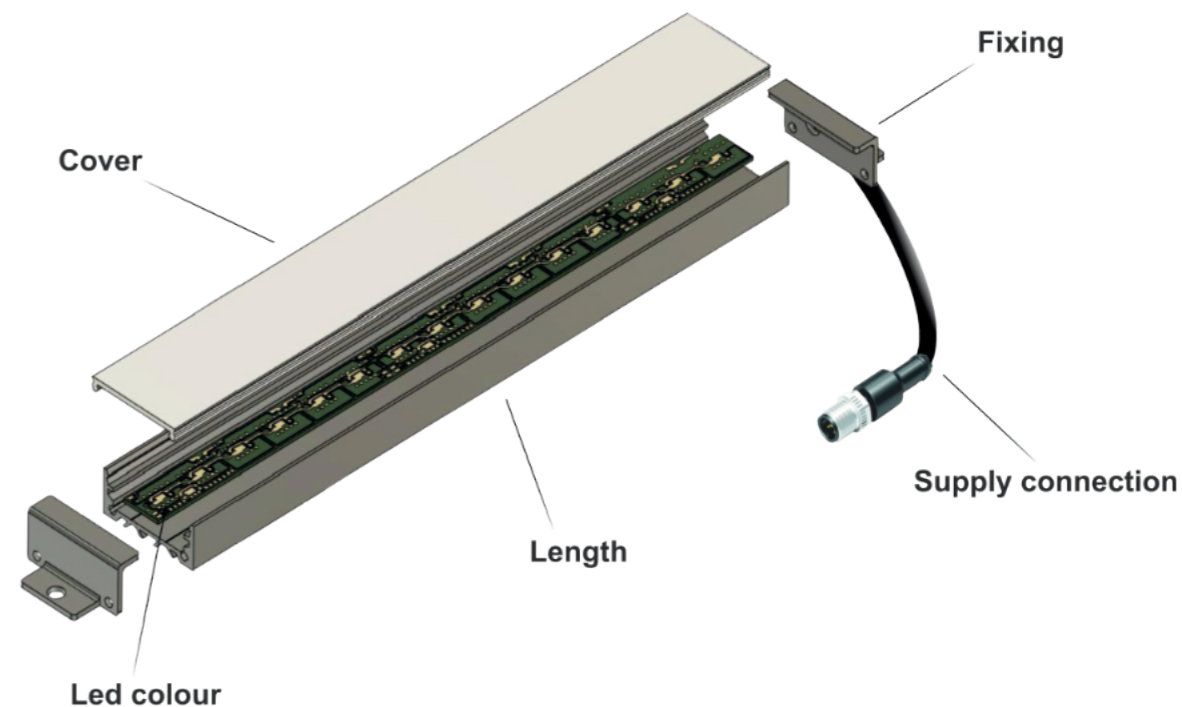
Your Code : **GEIL42** - **6K** - **300** - **OP** - - **M12S**









XXX	Base Lengths	-YYY	Led Colours	-CCC	Powers	-WW1	Cover variants
GEIL03	3 cm	-6K	Base 6000K Cold White		Base 85 mA per led	-T	Base Transparent cover
GEIL05	5 cm	-4K	4000K Natural White	-10	10 mA per led	-OP	Base Opaline cover
GEIL10	10 cm	-365	UV 365 nm	-20	20 mA per led	-ST	Satin cover
GEIL20	20 cm	-385	UV 385 nm	-40	40 mA per led	-OPB	Semi-opaline black cover
GEIL28	28 cm	-395	UV 395 nm	-120	120 mA per led Semi-continuous use	-P	Polarizing filter cover
GEIL34	34 cm	-405	UV 405 nm	-300	300 mA per led only strobe use	-OPP	Polarizing filter + Opaline cover
GEIL42	42 cm	-RGB	RGB	-RA10	Analog reg 0-10V	-WW2	Fixing variants
GEIL50	50 cm	-450	450 nm Royal Blue	-RA24	Analog reg 0-24V		Base fixing
GEIL100	100 cm	-524	524 nm Green	-CC	Current Control	-FC	Short fixing
GEIL200	200 cm	-625	625 nm Red	-CCC	Current on demand	-FS	Rear fixing
GEILXXX	from 3 cm to 600 cm on demand	-660	660 nm Deep Red			-WW3	Cables
		-730	730 nm IR				Base 2 Mt cable 2 wires
		-850	850 nm IR			-M8	20 cm cable + M8 3P M
		-950	950 nm IR			-M12	20 cm cable + M12 5P M
		-1050	1050 nm SWIR			-S	2 Mt cable + logic start
		-1200	1200 nm SWIR			-M8S	20 cm cable + M8 3P M + logic start
		-1300	1300 nm SWIR			-M12S	20 cm cable + M12 5P M + logic start
		-1450	1450 nm SWIR			-5M	5 Mt 2P cable
		-1550	1550 nm SWIR			-5MS	5 Mt 3P cable + logic start
		-YYY	Colour on demand			-WW3	Supply connection on demand

Not all combinations are available

Cable extensions for M8 and M12: page 54

CONFIGURATION GUIDE



- 
NEW SOLUTION
 DESIGN A NEW ONE
info@genesi-lux.it
- 
SAMPLE
 TEST THE PRODUCT
info@genesi-lux.it
- 
DOWNLOAD
 TECHNICAL SPECIFICATIONS
www.genesi-elettronica.com
- 
REQUEST
 THE PRICE LIST
info@genesi-lux.it
- 
 Create the perfect solution for your project with our technicians.
- 
 Test the product by requesting a sample or a kit with custom lights on demand.
- 
 Download the technical specifications for more details.
- 
 Email us to request the price list.

GEIL



24 Vdc

IP65 Protection Degree

CE RoHS

Optional IO-Link External controller

Ex. Code : **GEILXXX** -**YYY** -**CCC** -**WW1** -**WW2** -**WW3**

XXX	Base Lengths
GEIL03	3 cm
GEIL05	5 cm
GEIL10	10 cm
GEIL20	20 cm
GEIL28	28 cm
GEIL34	34 cm
GEIL42	42 cm
GEIL50	50 cm
GEIL100	100 cm
GEIL200	200 cm
GEILXXX	from 3 cm to 600 cm on demand

-YYY	Led Colours
-6K	Base 6000K Cold White
-4K	4000K Natural White
-365	UV 365 nm
-385	UV 385 nm
-395	UV 395 nm
-405	UV 405 nm
-RGB	RGB
-450	450 nm Royal Blue
-524	524 nm Green
-625	625 nm Red
-660	660 nm Deep Red
-730	730 nm IR
-850	850 nm IR
-950	950 nm IR
-1050	1050 nm SWIR
-1200	1200 nm SWIR
-1300	1300 nm SWIR
-1450	1450 nm SWIR
-1550	1550 nm SWIR
-YYY	Colour on demand

-CCC	Powers
	Base 85 mA per led
-10	10 mA per led
-20	20 mA per led
-40	40 mA per led
-120	120 mA per led Semi-continuous use
-300	300 mA per led only strobe use
-RA10	Analog reg 0-10V
-RA24	Analog reg 0-24V
-CC	Current Control
-CCC	Current on demand

-WW1	Cover variants
-T	Base Transparent cover
-OP	Base Opaline cover
-ST	Satin cover
-OPB	Semi-opaline black cover
-TP	Polarizing filter + Trasparent cover
-OPP	Polarizing filter + Opaline cover
-WW1	Cover on demand

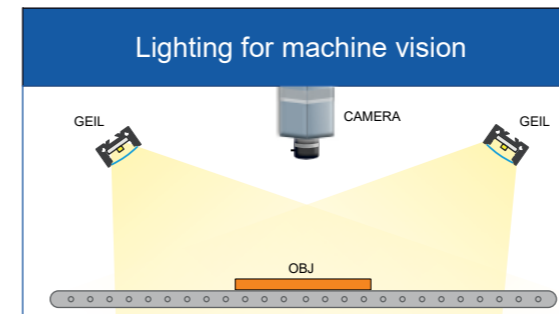
-WW2	Fixing variants
	Base fixing
-FC	Short fixing
-FS	Rear fixing

-WW3	Cables
	Base 2 Mt cable 2 wires
-M8	20 cm cable + M8 3P M
-M12	20 cm cable + M12 5P M
-S	2 Mt cable + logic start
-M8S	20 cm cable + M8 3P M + logic start
-M12S	20 cm cable + M12 5P M + logic start
-5M	5 Mt 2P cable
-5MS	5 Mt 3P cable + logic start
-WW3	Supply connection on demand

Cable extensions for M8 and M12: page 54

Not all combinations are available

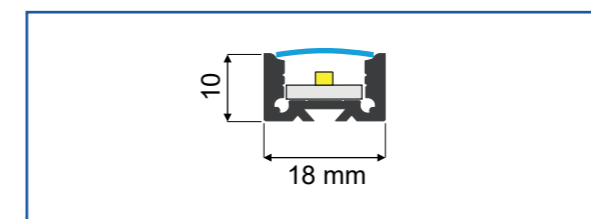
TYPICAL APPLICATIONS



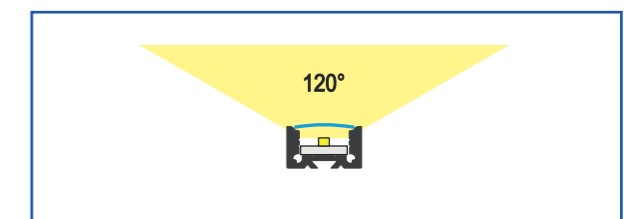
MODELS EXAMPLES

	Code	Description	Price
Base model	GEIL20-6K-OP	Led bar 20cm White 6000K Opaline cover 600Lm 170mA 4,0W 2Mt cable 2 Wires	63 €
Example	GEIL43-625-T-M8	Led bar 43cm Red 625nm Transparent cover GE442A-625-40 425mA 10W 20cm cable M8 3P M	145 €
Example	GEIL100-RGB-OP-M12	Led bar 100cm RGB Opaline cover GE440-20mA 1,440 A 34W 20cm cable M12 5 P M	420 €

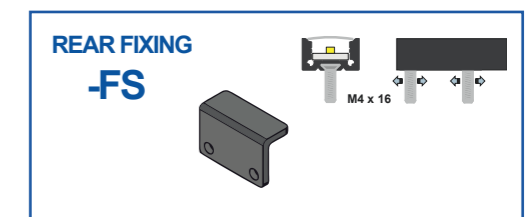
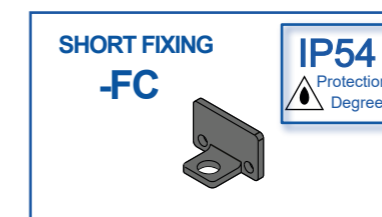
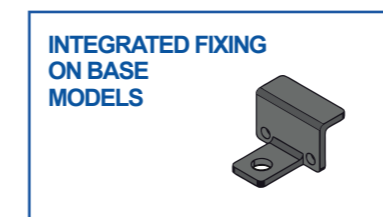
MECHANICAL DRAWING



BEAM ANGLE



FIXING



NEW SOLUTION
DESIGN A NEW ONE
info@genesi-lux.it



SAMPLE
TEST THE PRODUCT
info@genesi-lux.it



DOWNLOAD
TECHNICAL SPECIFICATIONS
www.genesi-elettronica.com



REQUEST
THE PRICE LIST
info@genesi-lux.it



24 Vdc

IP65 Protection Degree

CE RoHS

Optional IO-Link External controller

Ex. Code : **GEILDXXX** -YYY -CCC -WW1 -WW2 -WW3

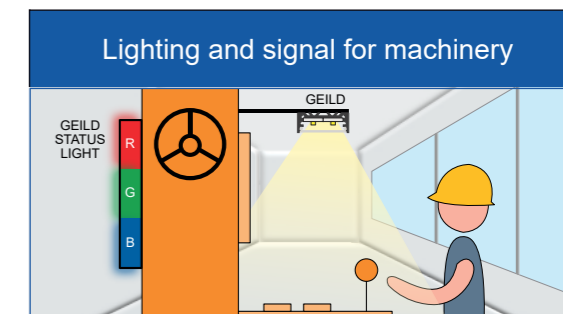
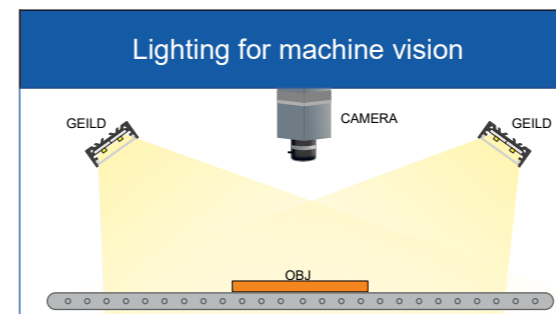
XXX	Base Lengths	-YYY	Led Colours	-CCC	Powers	-WW1	Cover variants
GEILD03	3 cm	-6K	Base 6000K Cold White		Base 85 mA per led	-T	Base Transparent cover
GEILD05	5 cm	-4K	4000K Natural White	-10	10 mA per led	-OP	Base Opaline cover
GEILD10	10 cm	-365	UV 365 nm	-20	20 mA per led	-ST	Satin cover
GEILD20	20 cm	-385	UV 385 nm	-40	40 mA per led	-OPB	Semi-opaline black cover
GEILD28	28 cm	-395	UV 395 nm	-120	120 mA per led Semi-continuous use	-TP	Polarizing filter + Transparent cover
GEILD34	34 cm	-405	UV 405 nm	-300	300 mA per led only strobe use	-OPP	Polarizing filter + Opaline cover
GEILD42	42 cm	-RGB	RGB	-RA10	Analog reg 0-10V	-WW1	Cover on demand
GEILD50	50 cm	-450	450 nm Royal Blue	-RA24	Analog reg 0-24V	-WW2	Fixing variants
GEILD100	100 cm	-524	524 nm Green	-CC	Current Control	-FC	Base fixing
GEILD200	200 cm	-625	625 nm Red	-CCC	Current on demand	-FS	Short fixing
GEILDXXX	from 3 cm to 600 cm on demand	-660	660 nm Deep Red			-WW3	Cables
		-730	730 nm IR				Base 2 Mt cable 2 wires
		-850	850 nm IR			-M8	20 cm cable + M8 3P M
		-950	950 nm IR			-M12	20 cm cable + M12 5P M
		-1050	1050 nm SWIR			-S	2 Mt cable + logic start
		-1200	1200 nm SWIR			-M8S	20 cm cable + M8 3P M + logic start
		-1300	1300 nm SWIR			-M12S	20 cm cable + M12 5P M + logic start
		-1450	1450 nm SWIR			-5M	5 Mt 2P cable
		-1550	1550 nm SWIR			-5MS	5 Mt 3P cable + logic start
		-YYY	Colour on demand			-WW3	Supply connection on demand

Up to 2 different colours in a single light

Not all combinations are available

Cable extensions for M8 and M12: page 54

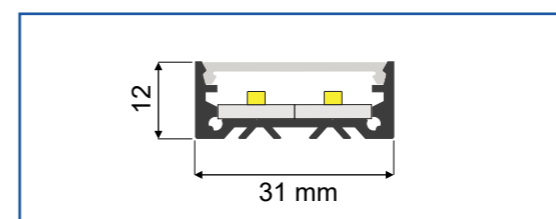
TYPICAL APPLICATIONS



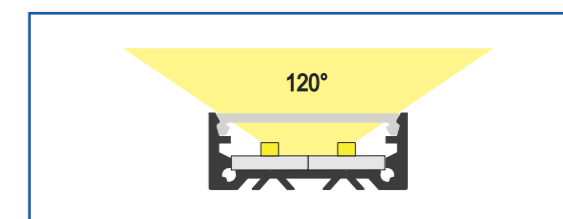
MODELS EXAMPLES

	Code	Description	Price
Base model	GEILD20-6K-OP	Led bar 20cm White 6000K Opaline cover 1200Lm 340mA 8W 2Mt cable 2 Wires	104 €
Example	GEILD50-850-T-M12S	Led bar 50cm IR 850nm Transparent cover 840mA 20W 20cm cable M12 5P M + logic start	263 €
Example	GEILD100-6K-ST-M8S	Led bar 100cm White 6000K Satin PMMA cover 7200Lm 2000mA 48W 20cm cable M8 3P M + logic start	373 €

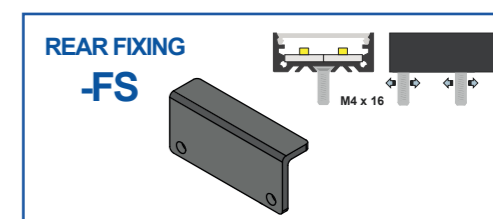
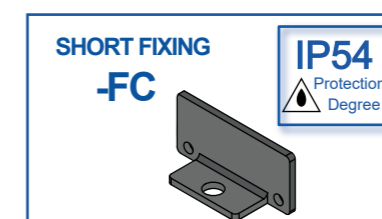
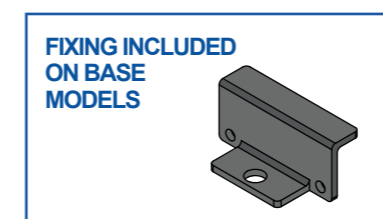
MECHANICAL DRAWING

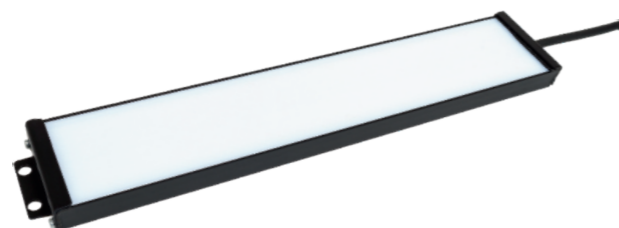


BEAM ANGLE



FIXING





24 Vdc

IP65 Protection Degree

CE RoHS

Optional IO-Link External controller

Ex. Code : **GELXXX**-**YYY**-**CCC**-**WW1**-**WW2**-**WW3**

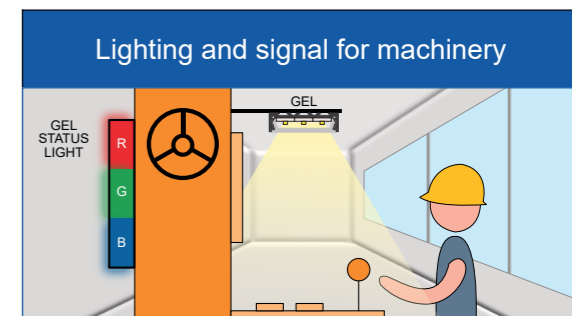
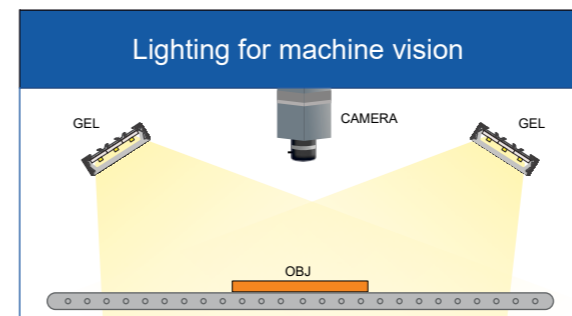
XXX	Base Lengths	-YYY	Led Colours	-CCC	Powers	-WW1	Cover variants
GEL05	5 cm	-6K	Base 6000K Cold White		Base 85 mA per led up to 25 cm	-T	Base Transparent cover
GEL09	9 cm	-4K	4000K Natural White		Base 70 mA per led up to 50 cm	-OP	Base Opaline cover
GEL18	18 cm	-365	UV 365 nm		Base 55 mA per led up to 200 cm	-ST	Satin cover
GEL25	25 cm	-385	UV 385 nm	-10	10 mA per led	-TP	Polarizing filter + Transparent cover
GEL34	34 cm	-395	UV 395 nm	-20	20 mA per led	-OPP	Polarizing filter + Opaline cover
GEL42	42 cm	-405	UV 405 nm	-40	40 mA per led	-WW1	Cover on demand
GEL50	50 cm	-RGB	RGB	-120	120 mA per led Semi-continuous use	-WW2	Fixing variants
GEL100	100 cm	-450	450 nm Royal Blue	-300	300 mA per led only strobe use		Base fixing
GEL200	200 cm	-524	524 nm Green	-RA10	Analog reg 0-10V	-FC	Short fixing
GELXXX	from 3 cm to 600 cm on demand	-625	625 nm Red	-RA24	Analog reg 0-24V	-FS	Rear fixing
		-660	660 nm Deep Red	-CC	Current Control	-WW3	Cables
		-730	730 nm IR	-CCC	Current on demand		Base 2 Mt cable 2 wires
		-850	850 nm IR			-M8	20 cm cable + M8 3P M
		-950	950 nm IR			-M12	20 cm cable + M12 5P M
		-1050	1050 nm SWIR			-S	2 Mt cable + logic start
		-1200	1200 nm SWIR			-M8S	20 cm cable + M8 3P M + logic start
		-1300	1300 nm SWIR			-M12S	20 cm cable + M12 5P M + logic start
		-1450	1450 nm SWIR			-5M	5 Mt 2P cable
		-1550	1550 nm SWIR			-5MS	5 Mt 3P cable + logic start
		-YYY	Colour on demand			-WW3	Supply connection on demand

Up to 3 different colours in a single light

Not all combinations are available

Cable extensions for M8 and M12: page 54

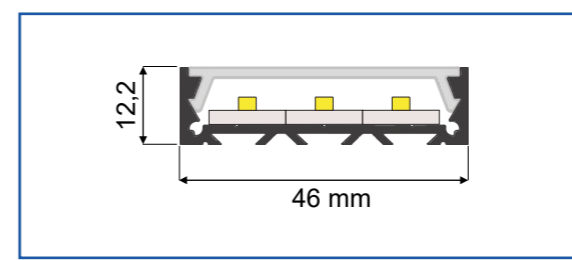
TYPICAL APPLICATIONS



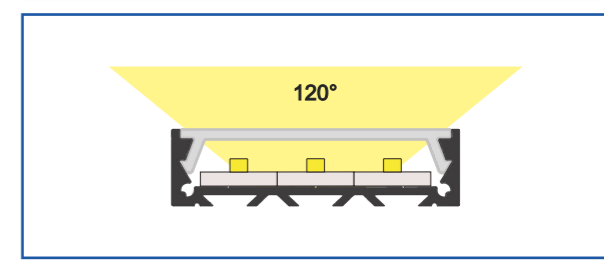
MODELS EXAMPLES

	Code	Description	Price
Base model	GEL25-6K-OP	Led bar 25cm White 6000K Opaline cover 2700Lm 765mA 18W 2 Mt cable 2 Wires	164 €
Example	GEL34-850-70-T-M8S	Led bar 34cm IR 850nm Transparent cover 840mA 20W 20cm cable M8 3P M+ logic start	240 €
Example	GEL200-470-OP	Led bar 200cm Blue 470nm Opaline cover GE442 4,25A 102W 2Mt cable	1.050 €

MECHANICAL DRAWING



BEAM ANGLE



FIXING

FIXING INCLUDED ON BASE MODELS

SHORT FIXING -FC

IP54 Protection Degree

REAR FIXING -FS

GEM



24 Vdc

IP65 Protection Degree

CE RoHS

Optional IO-Link External controller

Ex. Code : **GEMXXX** -**YYY** -**CCC** -**WW1** -**WW2**

XXX	Base Lengths
GEM03	3 cm
GEM05	5 cm
GEM09	9 cm
GEM18	18 cm
GEM25	25 cm
GEM34	34 cm
GEM42	42 cm
GEM50	50 cm
GEM100	100 cm
GEM200	200 cm
GEMXXX	from 3 cm to 600 cm on demand

-YYY	Led Colours	
-6K	Base 6000K Cold White	White
-4K	4000K Natural White	White
-365	UV 365 nm	UV - A
-385	UV 385 nm	
-395	UV 395 nm	
-405	UV 405 nm	
-RGB	RGB	Visible
-450	450 nm Royal Blue	
-524	524 nm Green	
-6KR	Bicolour 6K + Red	
-6KB	Bicolour 6K + Blue	
-6KG	Bicolour 6K + Green	Nir
-625	625 nm Red	
-660	660 nm Deep Red	
-730	730 nm IR	
-850	850 nm IR	
-950	950 nm IR	Swir
-1050	1050 nm SWIR	
-1200	1200 nm SWIR	
-1300	1300 nm SWIR	
-1450	1450 nm SWIR	
-1550	1550 nm SWIR	
-YYY	Colour on demand	

-CCC	Powers
	Base 120 mA per led up to 200
-20	20 mA per led
-40	40 mA per led
-70	70 mA per led
-85	85 mA per led
-300	300 mA per led only strobe use
-RA10	Analog reg 0-10V
-RA24	Analog reg 0-24V
-CC	Current Control
-CCC	Current on demand

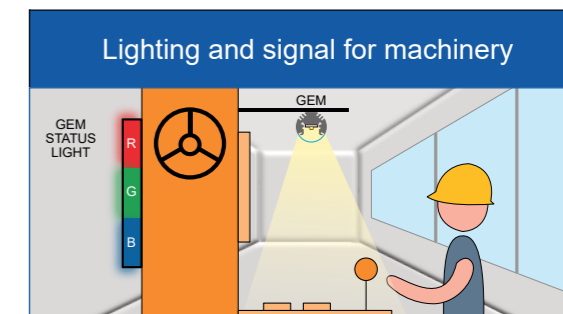
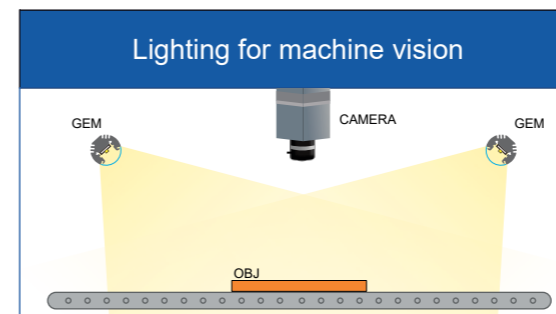
-WW1	Cover variants
-T	Base Transparent cover
-OP	Base Opaline cover
-L10	10° lens
-L20	20° lens + transparent cover
-L25	25° lens
-L40	40° lens + transparent cover
-L60	60° lens + transparent cover
-TP	Polarizing filter + Transparent cover
-WW1	Cover on demand

-WW2	Cables
	Base 2 Mt cable 2 wires
-M8	20 cm cable + M8 3P M
-M12	20 cm cable + M12 5P M
-S	2 Mt cable + logic start
-M8S	20 cm cable + M8 3P M + logic start
-M12S	20 cm cable + M12 5P M + logic start
-5M	5 Mt 2P cable
-5MS	5 Mt 3P cable + logic start
-WW3	Supply connection on demand

Cable extensions for M8 and M12: page 54

Not all combinations are available

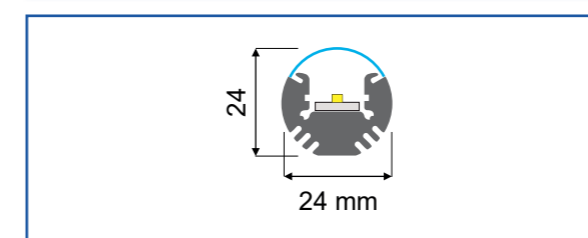
TYPICAL APPLICATIONS



MODELS EXAMPLES

	Code	Description	Price
Base model	GEM25-6K-OP	Led bar 25cm White 6000K Opaline cover 1230Lm 340mA 8,2W 2 Mt cable 2 Wires	72 €
Example	GEM25-625-L10	Led bar 25cm RED 625nm 10° Lens cover 340mA 8,6W 2Mt cable 2 Wires	130 €
Example	GEM230-6KB-OP-M12	Led bar 230cm White 6000K + Blue 470nm opaline cover 3,23A 20cm M12 5P M	550 €

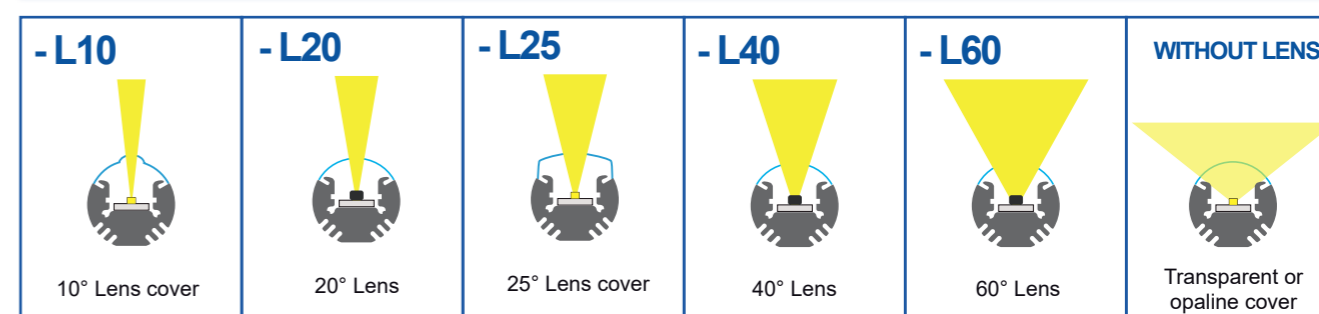
MECHANICAL DRAWING



FIXING



BEAM ANGLES



GEMB



24 Vdc

IP65 Protection Degree

CE RoHS

Optional IO-Link External controller

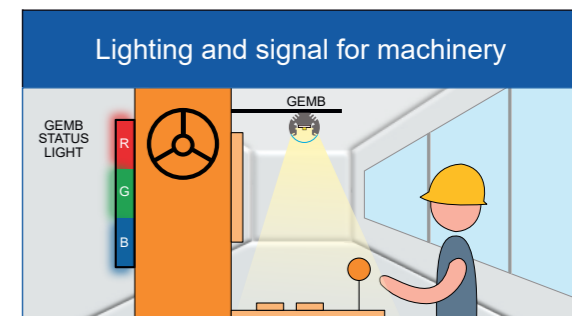
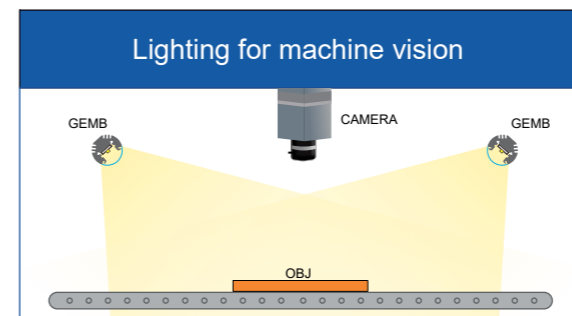
Ex. Code : **GEMBXXX** -YYY -CCC -WW1 -WW2

XXX	Base Lengths	-YYY	Led Colours	-CCC	Powers	-WW1	Cover variants	
GEMB03	3 cm	-6K	Base 6000K Cold White		Base 120 mA per led up to 200	-T	Base Transparent cover	
GEMB05	5 cm	-4K	4000K Natural White	-20	20 mA per led	-OP	Base Opaline cover	
GEMB09	9 cm	-365	UV 365 nm	-40	40 mA per led	-L10	10° lens	
GEMB18	18 cm	-385	UV 385 nm	-70	70 mA per led	-L20	20° lens + transparent cover	
GEMB25	25 cm	-395	UV 395 nm	-85	85 mA per led	-L25	25° lens	
GEMB34	34 cm	-405	UV 405 nm	-300	300 mA per led only strobe use	-L40	40° lens + transparent cover	
GEMB42	42 cm	-RGB	RGB	-RA10	Analog reg 0-10V	-L60	60° lens + transparent cover	
GEMB50	50 cm	-450	450 nm Royal Blue	-RA24	Analog reg 0-24V	-TP	Polarizing filter + Transparent cover	
GEMB100	100 cm	-524	524 nm Green	-CC	Current Control	-WW1	Cover on demand	
GEMB200	200 cm	-6KR	Bicolour 6K + Red	-CCC	Current on demand	-WW2	Cables	
GEMBXXX	from 3 cm to 600 cm on demand	-6KB	Bicolour 6K + Blue				Base 2 Mt cable 2 wires	
		-6KG	Bicolour 6K + Green				-M8	20 cm cable + M8 3P M
		-625	625 nm Red				-M12	20 cm cable + M12 5P M
		-660	660 nm Deep Red				-S	2 Mt cable + logic start
		-730	730 nm IR				-M8S	20 cm cable + M8 3P M + logic start
		-850	850 nm IR				-M12S	20 cm cable + M12 5P M + logic start
		-950	950 nm IR				-5M	5 Mt 2P cable
		-1050	1050 nm SWIR				-5MS	5 Mt 3P cable + logic start
		-1200	1200 nm SWIR				-WW3	Supply connection on demand
		-1300	1300 nm SWIR					
		-1450	1450 nm SWIR					
		-1550	1550 nm SWIR					
		-YYY	Colour on demand					

Not all combinations are available

Cable extensions for M8 and M12: page 54

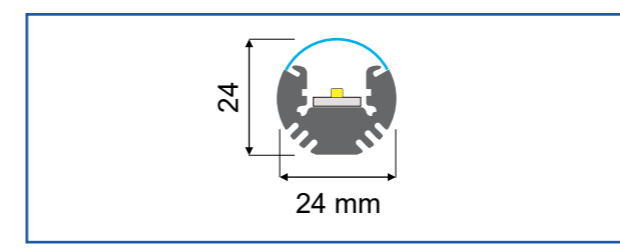
TYPICAL APPLICATIONS



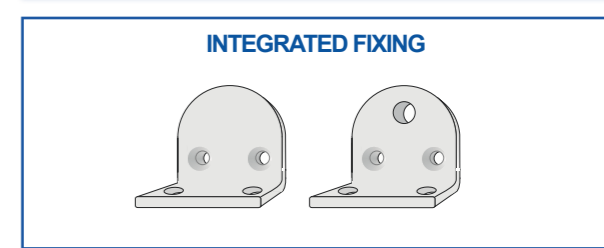
MODELS EXAMPLES

	Code	Description	Price
Base model	GEMB25-6K-OP	Led bar 25cm White 6000K Opaline cover 1230Lm 340mA 8,2W 2 Mt cable 2 Wires	66 €
Example	GEMB05-625-85-T-M8S	Led bar 5cm RED 625nm Transparent cover 85mA 20cm cable M8 3P M + logic start	85 €
Example	GEMB50-524-L25-5MS	Led bar 50cm Green 524nm 25° Lens cover 840mA 20W 5Mt 3P cable + logic start	177 €

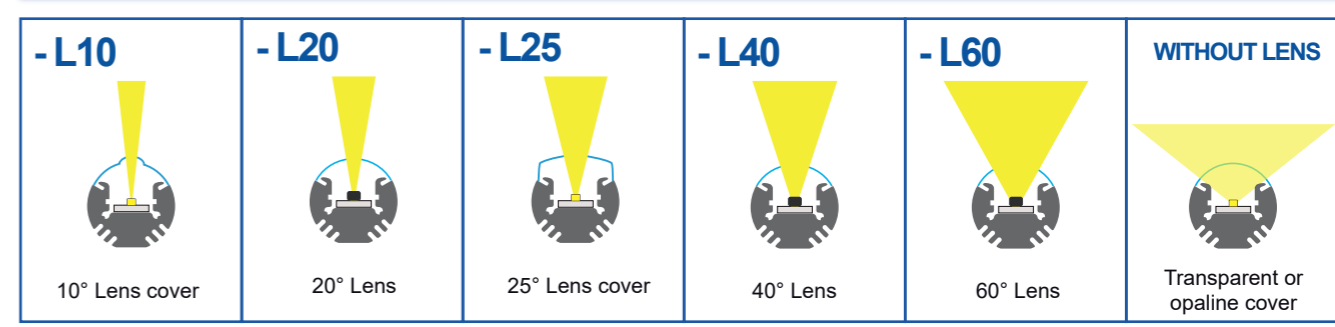
MECHANICAL DRAWING



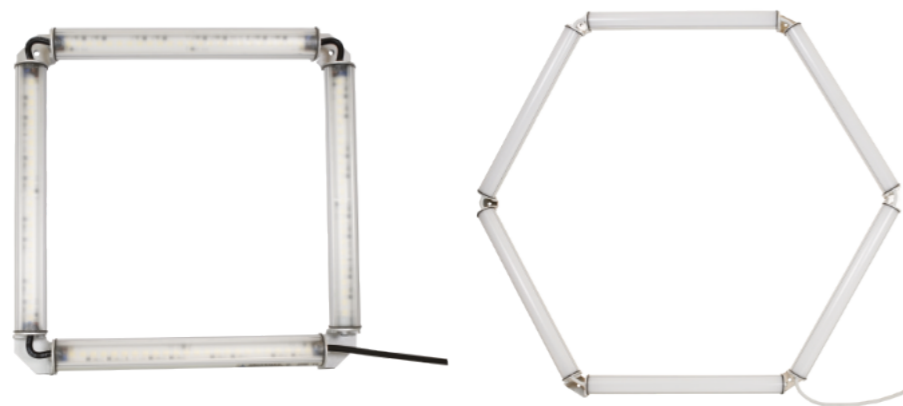
FIXING



BEAM ANGLES



GEMX4-X6



24 Vdc

IP65 Protection Degree

CE RoHS

Ex. Code : **GEMX4-X6** -YYY -CCC -WW1 -WW2

XXX	Base Lengths
GEMX4-03	3 cm
GEMX4-05	5 cm
GEMX4-09	9 cm
GEMX4-18	18 cm
GEMX4-25	25 cm
GEMX4-50	50 cm
GEMX6-09	9 cm
GEMX6-18	18 cm
GEMX6-25	25 cm
GEMX6-50	50 cm
GEMX-XXX	from 3 cm to 100 cm on demand

-YYY	Led Colours	White
-6K	Base 6000K Cold White	White
-4K	4000K Natural White	
-365	UV 365 nm	UV - A
-385	UV 385 nm	
-395	UV 395 nm	
-405	UV 405 nm	
-RGB	RGB	Visible
-450	450 nm Royal Blue	
-524	524 nm Green	
-625	625 nm Red	
-660	660 nm Deep Red	
-730	730 nm IR	Nir
-850	850 nm IR	
-950	950 nm IR	
-1050	1050 nm SWIR	Swir
-1200	1200 nm SWIR	
-1300	1300 nm SWIR	
-1450	1450 nm SWIR	
-1550	1550 nm SWIR	
-YYY	Colour on demand	

-CCC	Powers
	Base 120 mA per led up to 200
-20	20 mA per led
-40	40 mA per led
-70	70 mA per led
-85	85 mA per led
-300	300 mA per led only strobe use
-RA10	Analog reg 0-10V
-RA24	Analog reg 0-24V
-CC	Current Control
-CCC	Current on demand

-WW1	Cover variants
-T	Base Transparent cover
-OP	Base Opaline cover
-L10	10° lens
-L20	20° lens + transparent cover
-L25	25° lens
-L40	40° lens + transparent cover
-L60	60° lens + transparent cover
-TP	Polarizing filter + Transparent cover
-WW1	Cover on demand

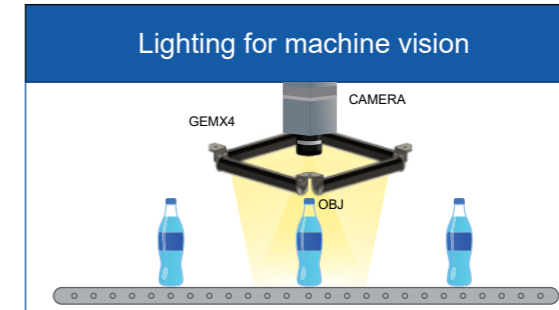
-WW2	Cables
	Base 2 Mt cable 2 wires
-M8	20 cm cable + M8 3P M
-M12	20 cm cable + M12 5P M
-S	2 Mt cable + logic start
-M8S	20 cm cable + M8 3P M + logic start
-M12S	20 cm cable + M12 5P M + logic start
-5M	5 Mt 2P cable
-5MS	5 Mt 3P cable + logic start
-WW2	Supply connection on demand

Cable extensions for M8 and M12: page 54

XXX	Base Lengths
GEMX4S-03	3 cm
GEMX4S-05	5 cm
GEMX4S-09	9 cm
GEMX4S-18	18 cm
GEMX4S-25	25 cm
GEMX4S-50	50 cm
GEMX6S-09	9 cm
GEMX6S-18	18 cm
GEMX6S-25	25 cm
GEMX6S-50	50 cm
GEMX-XXX	from 3 cm to 100 cm on demand

Not all combinations are available

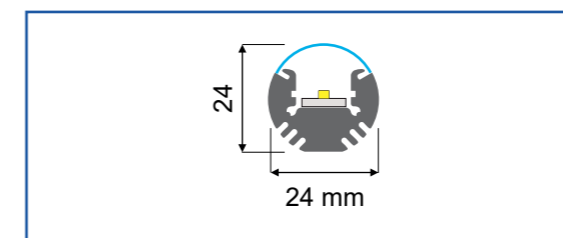
TYPICAL APPLICATIONS



MODELS EXAMPLES

	Code	Description	Price
Base model	GEMX4-18-6K-OP	Led bar square composition 18cm White 6000K Opaline cover 3240Lm 920mA 21,6W 2Mt cable 2 Wires	640 €
Example	GEMX4-42-6K-300-OP-S	Led bar square composition 42cm White 6000K Opaline cover 216000Lm Strobe use 10% T-ON 6 A 144W 2Mt cable 3P + logic start	1125 €
Example	GEMX6-05-524-OP-S	Led bar hexagonal composition 5cm Green G524 Opaline cover 480mA 12 W 2Mt cable 3 P + logic start	1040 €

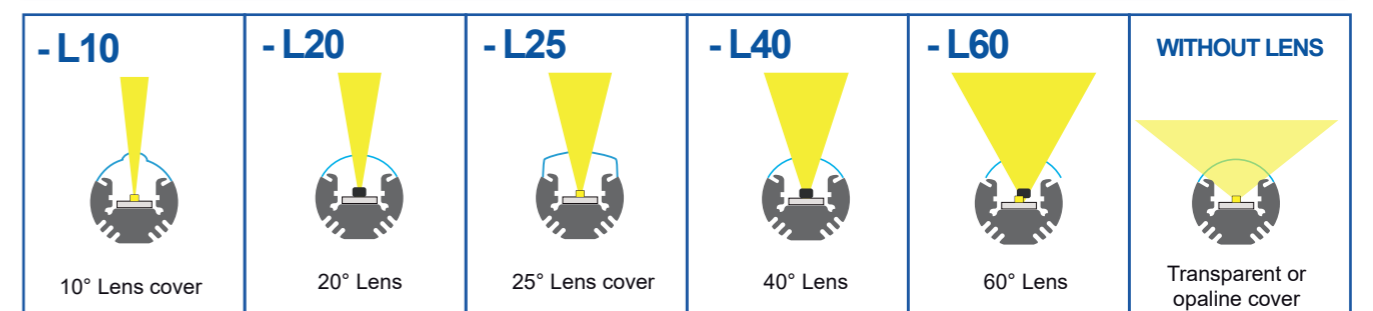
MECHANICAL DRAWING



FIXING



BEAM ANGLES





24 Vdc

IP67
Protection Degree

IP69K
Variant Protection Degree

CE
RoHS

Optional
IO-Link
External controller

Ex. Code : **GEMPCXXX** -**YYY** -**CCC** -**WW1** -**WW2**

XXX	Base Lengths
GEMPC09	9 cm
GEMPC18	18 cm
GEMPC25	25 cm
GEMPC34	34 cm
GEMPC42	42 cm
GEMPC50	50 cm
GEMPC100	100 cm
GEMPC200	200 cm
GEMPCXXX	from 3 cm to 200 cm on demand

-YYY	Led Colours	
-6K	Base 6000K Cold White	White
-4K	4000K Natural White	
-RGB	RGB	Visible
-450	450 nm Royal Blue	
-524	524 nm Green	
-625	625 nm Red	
-660	660 nm Deep Red	
-730	730 nm IR	
-850	850 nm IR	
-950	950 nm IR	
-1050	1050 nm SWIR	Swir
-1200	1200 nm SWIR	
-1300	1300 nm SWIR	
-1450	1450 nm SWIR	
-1550	1550 nm SWIR	
-YYY	Colour on demand	

-CCC	Powers
	Base 85 mA per led up to 200
-20	20 mA per led
-40	40 mA per led
-300	300 mA per led only strobe use
-RA10	Analog reg 0-10V
-RA24	Analog reg 0-24V
-CC	Current Control
-CCC	Current on demand

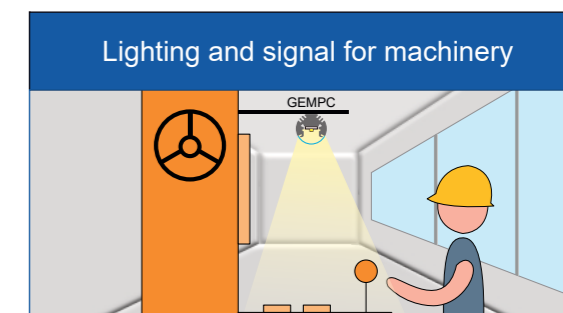
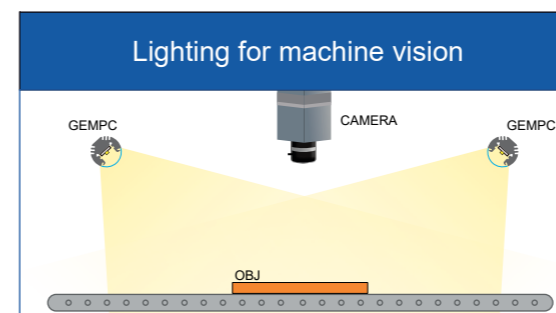
-WW1	Cover variants
-T	Base Transparent cover
-OP	Base Opaline cover
-L10	10° lens
-L20	20° lens + transparent cover
-L25	25° lens
-L40	40° lens + transparent cover
-L60	60° lens + transparent cover
-P	Polarizing filter cover
-WW1	Cover on demand

-WW2	Cables
	Base 2 Mt cable 2 wires
-M8	20 cm cable + M8 3P M
-M12	20 cm cable + M12 5P M
-S	2 Mt cable + logic start
-M8S	20 cm cable + M8 3P M + logic start
-M12S	20 cm cable + M12 5P M + logic start
-5M	5 Mt 2P cable
-5MS	5 Mt 3P cable + logic start
-A	Cable for food industry
-WW3	Supply connection on demand

Cable extensions for M8 and M12: page 54

Not all combinations are available

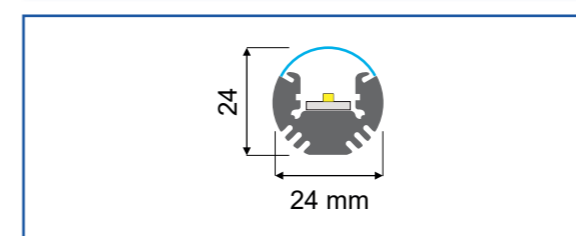
TYPICAL APPLICATIONS



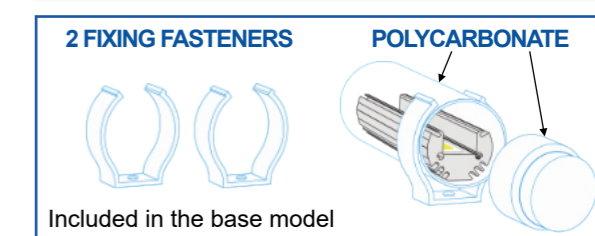
MODELS EXAMPLES

	Code	Description	Price
Base model	GEMPC25-6K-OP	Led bar 25cm White 6000K Opaline cover 840Lm 250mA 6,0W 2Mt cable 2 Wires	118 €
Example	GEMPC18-6K-L25-A	Led bar 18cm White 6000K lens 25° cover 560Lm 4W 2Mt 2P cable for food industry	140 €
Example	GEMPC18-6K-300-L25-A	Led bar 18cm White 6000K lens 25° cover 2160Lm Strobe use 10% T-ON 14W 2Mt 3P + logic start cable for food industry	185 €

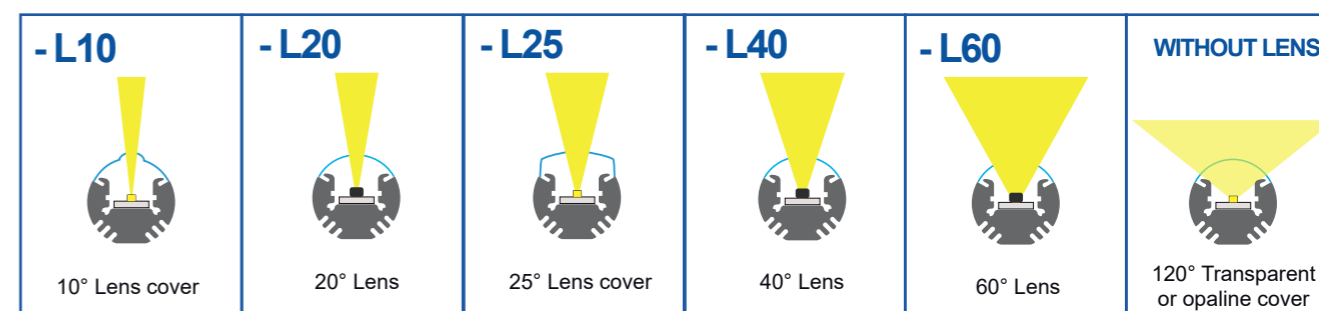
MECHANICAL DRAWING



FIXING



BEAM ANGLES



NEW SOLUTION
DESIGN A NEW ONE
info@genesi-lux.it



SAMPLE
TEST THE PRODUCT
info@genesi-lux.it



DOWNLOAD
TECHNICAL SPECIFICATIONS
www.genesi-elettronica.com



REQUEST
THE PRICE LIST
info@genesi-lux.it



24 Vdc

IP65 Protection Degree

IP67 Variant Protection Degree

CE RoHS

Optional IO-Link External controller

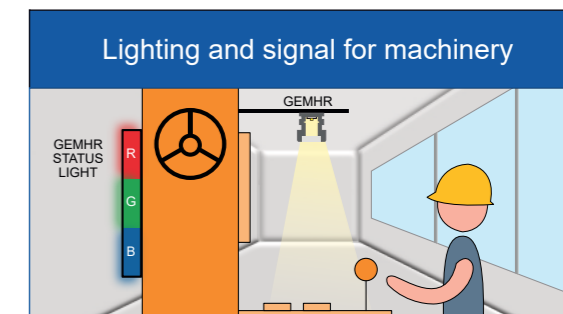
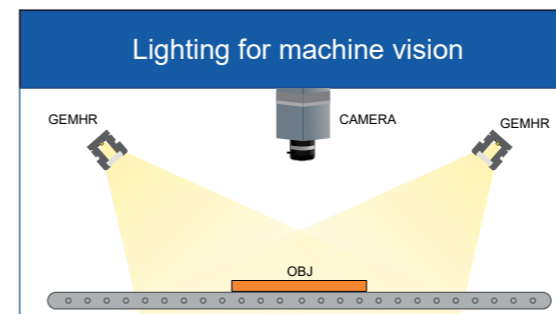
Ex. Code : **GEMHRXXX** -**YYY** -**CCC** -**WW1** -**WW2**

XXX	Base Lengths	-YYY	Led Colours	-CCC	Powers	-WW1	Cover variants
GEMHR03	3 cm	-6K	Base 6000K Cold White		Base 120 mA per led up to 200	-T	Base Transparent cover
GEMHR05	5 cm	-4K	4000K Natural White	-20	20 mA per led	-OP	Base Opaline cover
GEMHR09	9 cm	-365	UV 365 nm	-40	40 mA per led	-OPC	Collimating filter + Opaline cover
GEMHR18	18 cm	-385	UV 385 nm	-70	70 mA per led	-V	Pyrex glass 5 mm
GEMHR25	25 cm	-395	UV 395 nm	-85	85 mA per led	-TP	Polarizing filter + Transparent cover
GEMHR34	34 cm	-405	UV 405 nm	-300	300 mA per led only strobe use	-OPP	Polarizing filter + Opaline cover
GEMHR42	42 cm	-RGB	RGB	-RA10	Analog reg 0-10V	-IP67	IP67 protection degree
GEMHR50	50 cm	-450	450 nm Royal Blue	-RA24	Analog reg 0-24V	-WW1	Cover on demand
GEMHR100	100 cm	-524	524 nm Green	-CC	Current Control	-WW2	Cables
GEMHR200	200 cm	-625	625 nm Red	-CCC	Current on demand		Base 2 Mt cable 2 wires
GEMHRXXX	from 3 cm to 200 cm on demand	-660	660 nm Deep Red			-M8	20 cm cable + M8 3P M
		-730	730 nm IR			-M12	20 cm cable + M12 5P M
		-850	850 nm IR			-S	2 Mt cable + logic start
		-950	950 nm IR			-M8S	20 cm cable + M8 3P M + logic start
		-1050	1050 nm SWIR			-M12S	20 cm cable + M12 5P M + logic start
		-1200	1200 nm SWIR			-5M	5 Mt 2P cable
		-1300	1300 nm SWIR			-5MS	5 Mt 3P cable + logic start
		-1450	1450 nm SWIR			-WW2	Supply connection on demand
		-1550	1550 nm SWIR				
		-YYY	Colour on demand				

Cable extensions for M8 and M12: page 54

Not all combinations are available

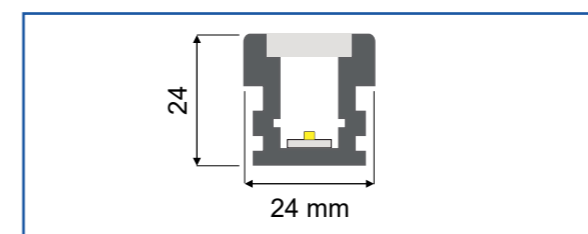
TYPICAL APPLICATIONS



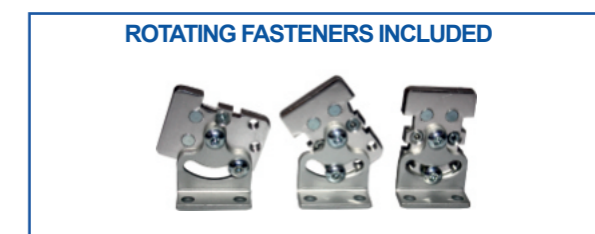
MODELS EXAMPLES

	Code	Description	Price
Base model	GEMHR25-6K-OP	Led bar 25cm White 6000K Opaline cover 1230Lm 340mA 8,2W 2 Mt cable 2 Wires	89 €
Example	GEMHR50-365-250-T	Led bar 50cm UV365nm Transparent cover GE472 18 led 45° CUN66B 750mA 18W 2Mt cable 2 Wires	455 €
Example	GEMHR180-4K-RA10-T	Led bar 180cm White 4000K Transparent cover 9450Lm 2,66 A 64W analog regulation 0-10V 2Mt cable 3 Wires	770 €

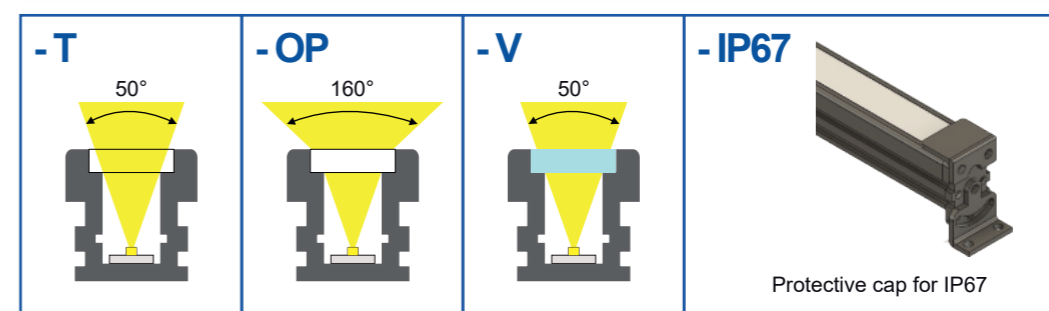
MECHANICAL DRAWING



FIXING



BEAM ANGLES AND COVERS



NEW SOLUTION
DESIGN A NEW ONE
info@genesi-lux.it



SAMPLE
TEST THE PRODUCT
info@genesi-lux.it



DOWNLOAD
TECHNICAL SPECIFICATIONS
www.genesi-elettronica.com



REQUEST
THE PRICE LIST
info@genesi-lux.it



24 Vdc

IP54 Protection Degree

CE RoHS

Optional IO-Link External controller

Ex. Code : **GEV****XXX**-**YYY**-**CCC**-**WW1**-**WW2**

XXX	Base Lengths
GEVA09	9 cm
GEVA18	18 cm
GEVA25	25 cm
GEVA34	34 cm
GEVA42	42 cm
GEVA60	60 cm
GEVA120	120 cm
GEVAXXX	from 9 cm to 200 cm on demand

-YYY	Led Colours	
-6K	Base 6000K Cold White	White
-4K	4000K Natural White	
-RGB	RGB	Visible
-450	450 nm Royal Blue	
-524	524 nm Green	
-625	625 nm Red	
-660	660 nm Deep Red	
-730	730 nm IR	Nir
-850	850 nm IR	
-950	950 nm IR	
-1050	1050 nm SWIR	Swir
-1200	1200 nm SWIR	
-1300	1300 nm SWIR	
-1450	1450 nm SWIR	
-1550	1550 nm SWIR	
-YYY	Colour on demand	

-CCC	Powers
	Base 120 mA per led up to 200
-20	20 mA per led
-40	40 mA per led
-85	85 mA per led
-300	300 mA per led only strobe use
-RA10	Analog reg 0-10V
-RA24	Analog reg 0-24V
-CC	Current Control
-CCC	Current on demand

-WW1	Cover variants
-OP	Base Opaline cover
-T	Transparent frosted cover
-TP	Polarizing filter + Transparent cover
-OPP	Polarizing filter + Opaline cover
-WW1	Cover on demand

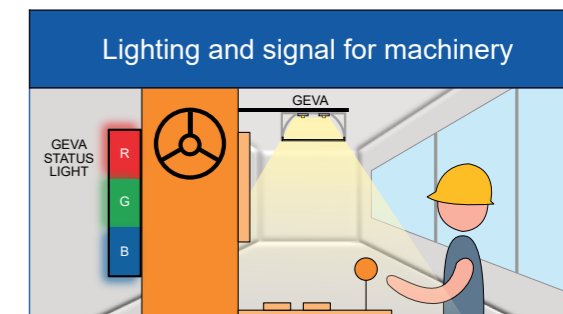
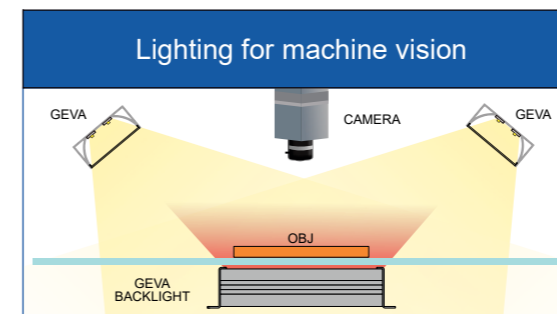
-WW2	Cables
	Base 2 Mt cable 2 wires
-M8	20 cm cable + M8 3P M
-M12	20 cm cable + M12 5P M
-S	2 Mt cable + logic start
-M8S	20 cm cable + M8 3P M + logic start
-M12S	20 cm cable + M12 5P M + logic start
-5M	5 Mt 2P cable
-5MS	5 Mt 3P cable + logic start
-WW2	Supply connection on demand

Cable extensions for M8 and M12: page 54

Up to 2 different colours in a single light

Not all combinations are available

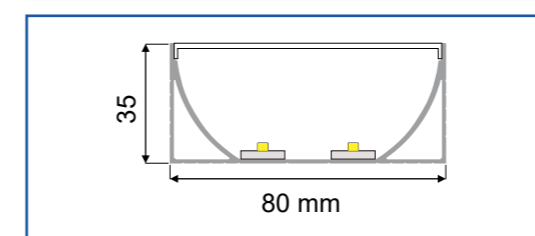
TYPICAL APPLICATIONS



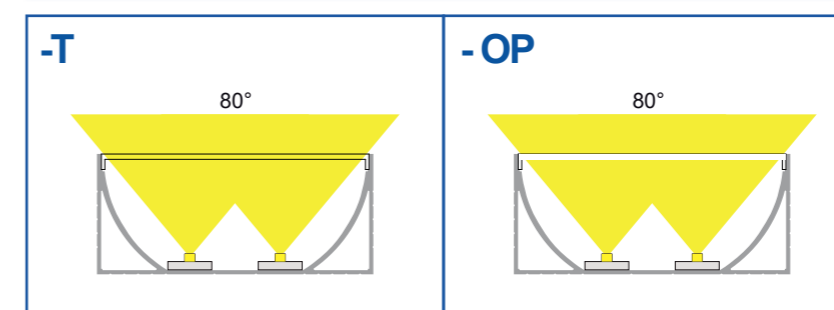
MODELS EXAMPLES

	Code	Description	Price
Base model	GEVA25-6K-OP	Led bar 25cm White 6000K Opaline cover 2300Lm 680mA 16,4W 2Mt cable 2 Wires	202 €
Example	GEVA42-850-70-OP	Led bar 42cm IR 850nm Opaline cover 700 mA, 16 W 2Mt cable 2 Wires	312 €
Example	GEVA140-524-OP	Led bar 140cm Green 524nm Opaline cover 3,84 A, 92 W 2Mt cable 2 Wires	936 €

MECHANICAL DRAWING



BEAM ANGLES AND COVERS



NEW SOLUTION
DESIGN A NEW ONE
info@genesi-lux.it



SAMPLE
TEST THE PRODUCT
info@genesi-lux.it



DOWNLOAD
TECHNICAL SPECIFICATIONS
www.genesi-elettronica.com



REQUEST
THE PRICE LIST
info@genesi-lux.it

GP - GENESI POWER BAR

Blue Line



24 Vdc

IP54 Protection Degree

IP65 Variant Protection Degree

CE RoHS

Internal controller with 4 Driving modes	
1	100% Continuous use
2	200% Semi-continuous use
3	400% Strobe use
4	10-100% Analog Reg.

Ex. Code : **GPXXX** -**YYY** -**WW1** -**WW2**

XXX	Base Lengths
GP06	6 cm
GP12	12 cm
GP23	23 cm
GP36	36 cm
GP46	46 cm
GP56	56 cm
GP66	66 cm
GPXXX	From 6 cm to 300 cm on demand

-YYY	Led Colours	
-6K	Base 6000K Cold White	White
-4K	4000K Natural White	White
-365	UV 365 nm	UV - A
-385	UV 385 nm	
-395	UV 395 nm	
-405	UV 405 nm	
-450	450 nm Royal Blue	Visible
-524	524 nm Green	
-625	625 nm Red	
-660	660 nm Deep Red	Nir
-730	730 nm IR	
-850	850 nm IR	
-950	950 nm IR	
-1050	1050 nm SWIR	Swir
-1200	1200 nm SWIR	
-1300	1300 nm SWIR	
-1450	1450 nm SWIR	
-1550	1550 nm SWIR	
-YYY	Colour on demand	

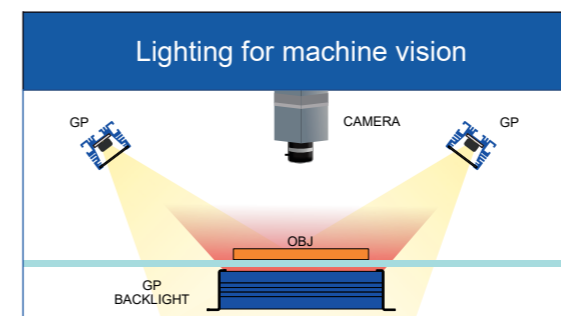
-WW1	Cover variants
-T	Base Transparent cover
-OP	Base Opaline cover BACKLIGHT FUNCTION
-ST	Satin cover
-T65	Transparent cover IP65
-L10	10° lens + transparent cover
-L30	30° lens + transparent cover
-L60	60° lens + transparent cover
-TP	Polarizing filter + Transparent cover
-OPP	Polarizing filter + Opaline cover
-WW1	Cover on demand

-WW2	Cables
	20 cm cable + M12 5P M
-WW2	Supply connection on demand

Cable extensions for M12: page 54

Not all combinations are available

TYPICAL APPLICATIONS



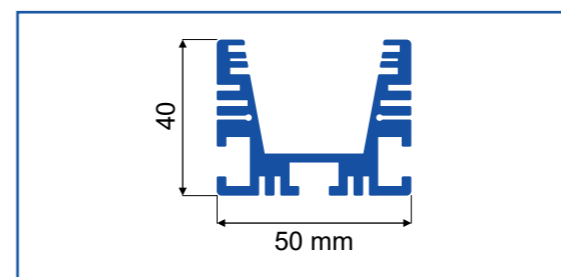
PIN-OUT

M12 5P Male Connector	
Pin 1	+24V
Pin 2	Start NPN < 1 to 0V
Pin 3	GND
Pin 4	Start PNP > 3 to 24V
Pin 5	1-10V Analog Reg.

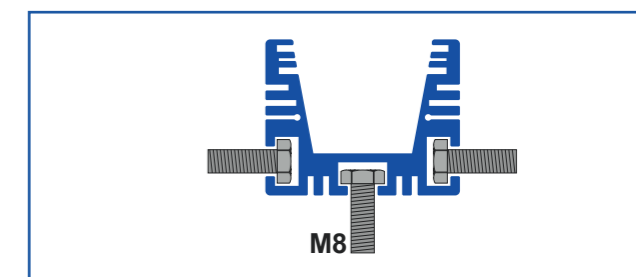
MODELS EXAMPLES

	Code	Description	Price
Base model	GP23-6K-T	Power bar 4 Driving Modes 23cm White 6000K Transparent cover 2160/10800Lm 0,6/4A 14/96W 20cm cable M12 M 5P	700 €
Example	GP36-365-45T	Power bar 4 Driving Modes 36cm UV365nm 45° lens + transparent cover 0,9/2,7A 22/65W 20cm cable M12 M 5P	2100 €
Example	GP102-850-OP	Power bar & backlight 4 Driving Modes 102cm IR 850nm Opaline cover 1/3,2A 24/77W 20cm cable M12 M 5P	2680 €
Example	GP133-625-L10	Power bar 4 Driving Modes 133cm Red 625nm 10° lens + transparent cover 2,4/24A 58/576W 20cm cable M12 M 5P	3480 €

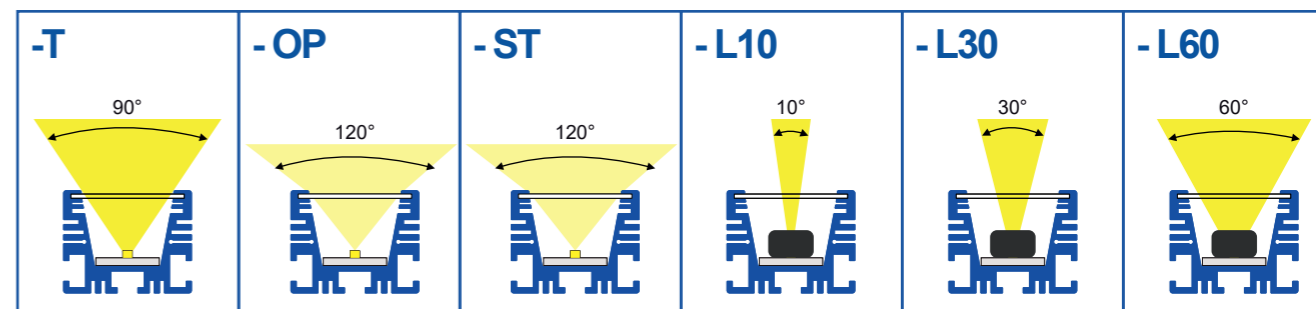
MECHANICAL DRAWING



FIXING



BEAM ANGLES AND COVERS





24 Vdc

IP54 Protection Degree

CE RoHS

Ex. Code : **GEVXXX** -**YYY** -**CCC** -**WW1** -**WW2**

XXX	Base Lengths	-YYY	Led Colours	-CCC	Powers	-WW1	Cover variants
GEVX06	6 cm	-6K	Base 6000K Cold White	UD	70 mA per led ULTRA DENSITY		Base 5° lens cover
GEVX10	10 cm	-4K	4000K Natural White	HD	85 mA per led HIGH DENSITY	-T65	5° lens cover - IP65
GEVX16	16 cm	-365	UV 365 nm	XD	300 mA per led POWER LED	-L12	12° lens cover
GEVX20	20 cm	-385	UV 385 nm	YD	2A per LED ONLY STROBE USE	-L20	20° lens + transparent cover
GEVX28	28 cm	-395	UV 395 nm	-CCC	Current on demand	-L40	40° lens + transparent cover
GEVX34	34 cm	-405	UV 405 nm			-TN	Transparent cover without lens
GEVX42	42 cm	-RGB	RGB			-TP	Transparent cover + Polarizing filter
GEVX50	50 cm	-450	450 nm Royal Blue			-TN65	Transparent cover without lens + 3M - IP65
GEVX60	60 cm	-524	524 nm Green				
GEVX100	100 cm	-625	625 nm Red				
GEVX150	150 cm	-660	660 nm Deep Red				
GEVX200	200 cm	-730	730 nm IR				
GEVXXX	from 3 cm to 600 cm on demand	-850	850 nm IR				
		-950	950 nm IR				
		-1050	1050 nm SWIR				
		-1200	1200 nm SWIR				
		-1300	1300 nm SWIR				
		-1450	1450 nm SWIR				
		-1550	1550 nm SWIR				
		-YYY	Colour on demand				

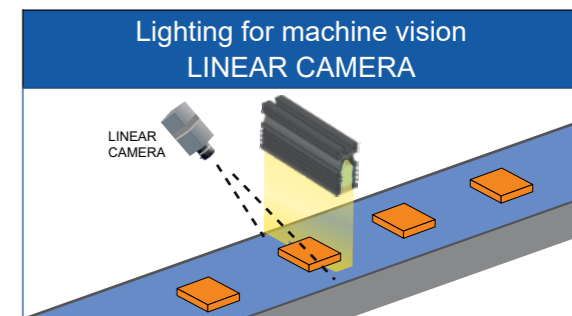
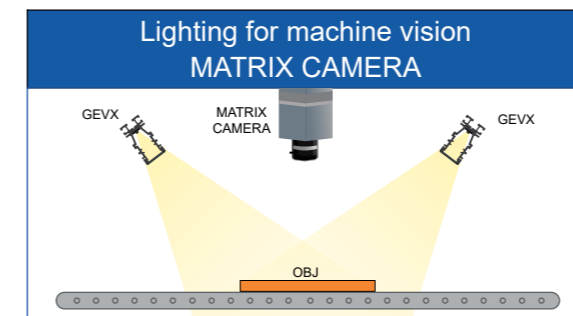
-WW2	Cables
	Base 2 Mt cable 2 wires
-M8	20 cm cable + M8 3P M
-M12	20 cm cable + M12 5P M
-S	2 Mt cable + logic start
-M8S	20 cm cable + M8 3P M + logic start
-M12S	20 cm cable + M12 5P M + logic start
-5M	5 Mt 2P cable
-5MS	5 Mt 3P cable + logic start
-WW2	Supply connection on demand

Up to 2 different colours in a single light

Not all combinations are available

Cable extensions for M8 and M12: page 54

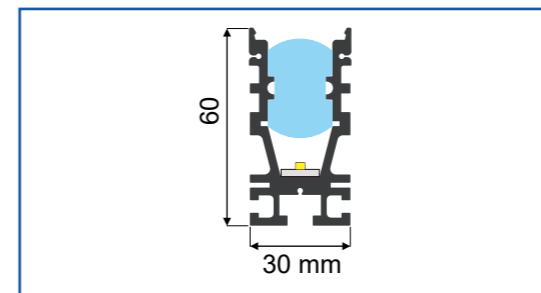
TYPICAL APPLICATIONS



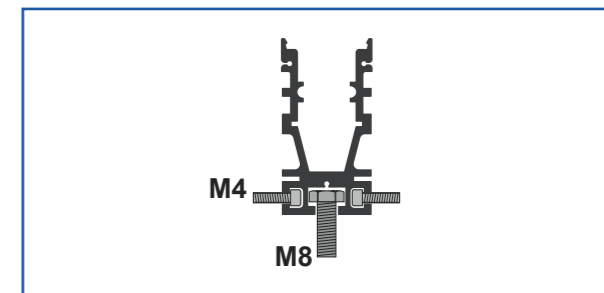
MODELS EXAMPLES

	Code	Description	Price
Base model	GEVX20-6K-UD	Power bar 20cm White 6000K 5° lens cover 2000Lm 560mA 13,4W 2Mt cable 2 Wires	310 €
Example	GEVX30-365-L65-10M	Power bar 30cm UV365 nm 5° lens cover 1,12 A 27W IP65 10Mt cable 2 Wires	1080 €
Example	GEVX240-625-UD	Power bar 240cm Red 625nm 5° lens cover 8,26A 198 W continuous use 2Mt 2 cables 2 Wires	2350 €

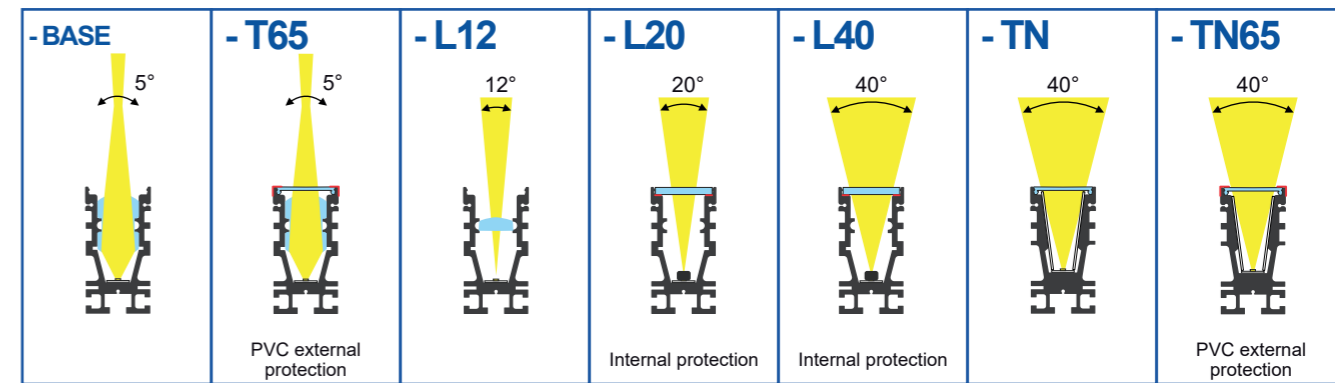
MECHANICAL DRAWING



FIXING



BEAM ANGLES AND COVERS



GEVXB



24 Vdc

IP54 Protection Degree

CE RoHS

Ex. Code : **GEVXBXXX** -YYY -CCC -WW1 -WW2

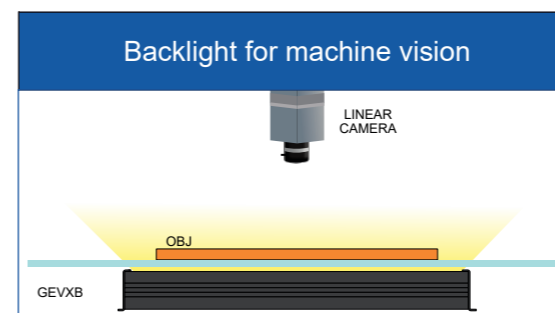
XXX	Base Lengths	-YYY	Led Colours	-CCC	Powers	-WW1	Cover variants
GEVXB06	6 cm	-6K	Base 6000K Cold White	UD	70 mA per led ULTRA DENSITY		Base satin cover
GEVXB10	10 cm	-4K	4000K Natural White	HD	85 mA per led HIGH DENSITY	-OP	Opaline cover
GEVXB16	16 cm	-365	UV 365 nm	XD	300 mA per led POWER LED	-OPB	Semi-opaline black cover
GEVXB20	20 cm	-385	UV 385 nm	YD	2A per LED ONLY STROBE USE	-IP65	Satin cover + 3M - IP65
GEVXB28	28 cm	-395	UV 395 nm	-CCC	Current on demand	-OPC	Collimating filter + Opaline cover
GEVXB34	34 cm	-405	UV 405 nm			-WW1	Cover on demand
GEVXB42	42 cm	-RGB	RGB				
GEVXB50	50 cm	-450	450 nm Royal Blue				
GEVXB60	60 cm	-524	524 nm Green			-WW2	Cables
GEVXB100	100 cm	-625	625 nm Red				Base 2 Mt cable 2 wires
GEVXB150	150 cm	-660	660 nm Deep Red			-M8	20 cm cable + M8 3P M
GEVXB200	200 cm	-730	730 nm IR			-M12	20 cm cable + M12 5P M
GEVXBXXX	from 3 cm to 600 cm on demand	-850	850 nm IR			-S	2 Mt cable + logic start
		-950	950 nm IR			-M8S	20 cm cable + M8 3P M + logic start
		-1050	1050 nm SWIR			-M12S	20 cm cable + M12 5P M + logic start
		-1200	1200 nm SWIR			-5M	5 Mt 2P cable
		-1300	1300 nm SWIR			-5MS	5 Mt 3P cable + logic start
		-1450	1450 nm SWIR			-WW2	Supply connection on demand
		-1550	1550 nm SWIR				
		-YYY	Colour on demand				

Up to 2 different colours in a single light

Not all combinations are available

Cable extensions for M8 and M12: page 54

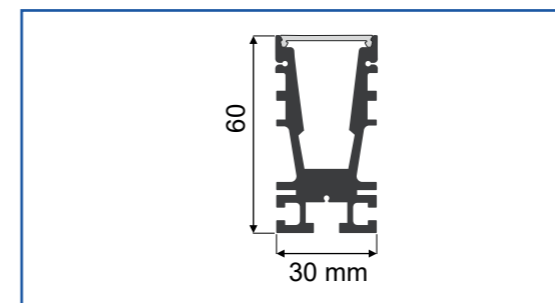
TYPICAL APPLICATIONS



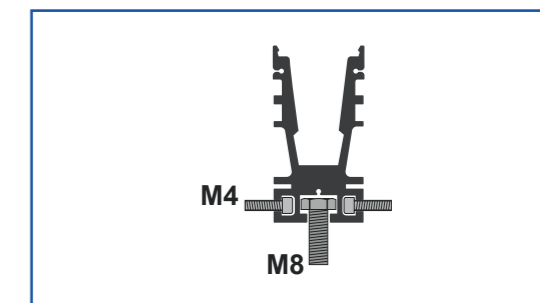
MODELS EXAMPLES

	Code	Description	Price
Base model	GEVXB20-6K-UD	Backlight bar 20cm White 6000K satin cover 2000Lm 560mA 13,4W 2Mt cable 2 Wires	300 €
Example	GEVXB140-850-70	Backlight bar 140cm led IR 850nm satin cover SC GE366 2,38 A 57W 2Mt cable 2 Wires	1400 €
Example	GEVXB350-625-500-IP65	Backlight bar 350cm led RED 625nm satin cover SK GE490 10,5 A 252W IP65 2Mt 2 cables 2 Wires	3550 €

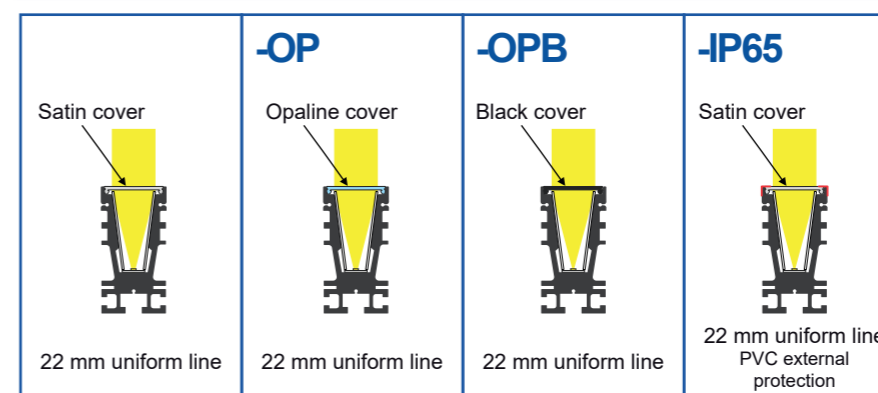
MECHANICAL DRAWING



FIXING



BEAM ANGLES AND COVERS



NEW SOLUTION
DESIGN A NEW ONE
info@genesi-lux.it



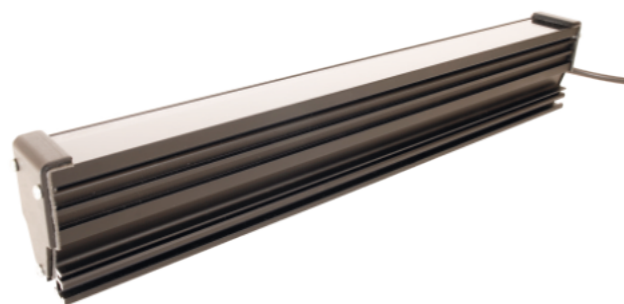
SAMPLE
TEST THE PRODUCT
info@genesi-lux.it



DOWNLOAD
TECHNICAL SPECIFICATIONS
www.genesi-elettronica.com



REQUEST
THE PRICE LIST
info@genesi-lux.it



24 Vdc

IP54 Protection Degree

CE RoHS

Ex. Code : **GEVXDXXX** -YYY -CCC -WW1 -WW2

XXX	Base Lengths
GEVXD20	20 cm
GEVXD36	36 cm
GEVXD52	52 cm
GEVXD84	84 cm
GEVXDXXX	from 20 cm to 600 cm on demand

-YYY	Led Colours	
-6K	Base 6000K Cold White	White
-4K	4000K Natural White	
-36	UV 365 nm	UV - A
-38	UV 385 nm	
-39	UV 395 nm	
-40	UV 405 nm	
-45	450 nm Royal Blue	Visible
-52	524 nm Green	
-62	625 nm Red	
-66	660 nm Deep Red	
-7	730 nm IR	Nir
-8	850 nm IR	
-9	950 nm IR	
-10	1050 nm SWIR	Swir
-11	1140 nm SWIR	
-12	1200 nm SWIR	
-13	1300 nm SWIR	
-14	1450 nm SWIR	
-15	1550 nm SWIR	
-16	1650 nm SWIR	
-19	1900 nm SWIR	
-YYY	Colour on demand	

-CCC	Powers
	Base 1 A per LED
-CCC	Current on demand (0-4 A)

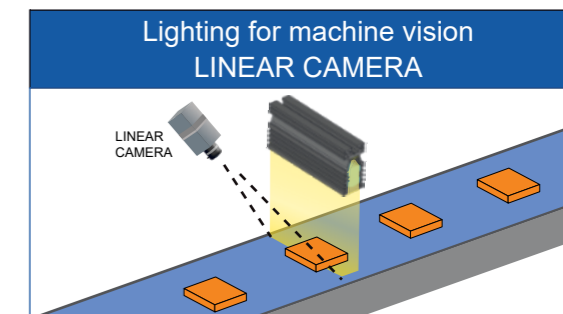
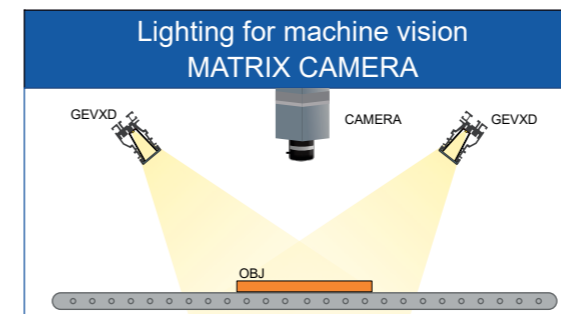
-WW1	Cover variants
-L	Base 5° lens for linear camera
-M	Base transparent cover for matrix camera
-ST	Satin cover for backlight use
-OP	Opaline cover for backlight use
-WW1	Cover on demand

-WW2	Cables
	Base 2 Mt cable 2 wires
-M8	20 cm cable + M8 3P M
-M12	20 cm cable + M12 5P M
-S	2 Mt cable + logic start
-M8S	20 cm cable + M8 3P M + logic start
-M12S	20 cm cable + M12 5P M + logic start
-5M	5 Mt 2P cable
-5MS	5 Mt 3P cable + logic start
-WW2	Supply connection on demand

Cable extensions for M8 and M12: page 54

Not all combinations are available

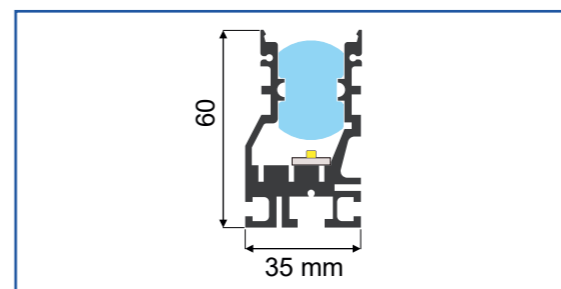
TYPICAL APPLICATIONS



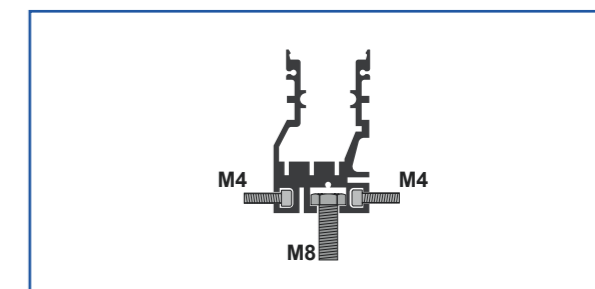
MODELS EXAMPLES

	Code	Description	Price
Base model	GEVXD20-12131415-1A-L	Power bar 4 channels 20cm SWIR 20cm 1200-1300-1450-1550nm 5° lens cover 1,2A 29W 20cm cable M12 8P M + 4 logic start	2020 €
Example	GEVXD52-6K1313-1A-L	Power bar 3 channels 52cm VIS-SWIR 6000K-1300-1300nm 5° lens cover 3,6A 86W 20cm cable M12 5P M + 2 logic start	2770 €
Example	GEVXD180-1515-1A-L	Power bar 2 channels 180cm 1550-1550nm 5° lens cover 6,48A 155W 20cm cable M12 5P M + 2 logic start	6600 €

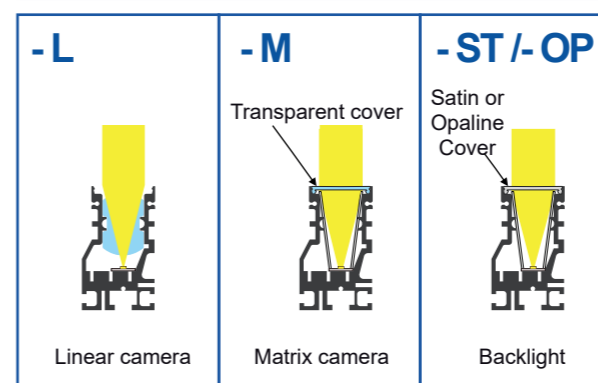
MECHANICAL DRAWING



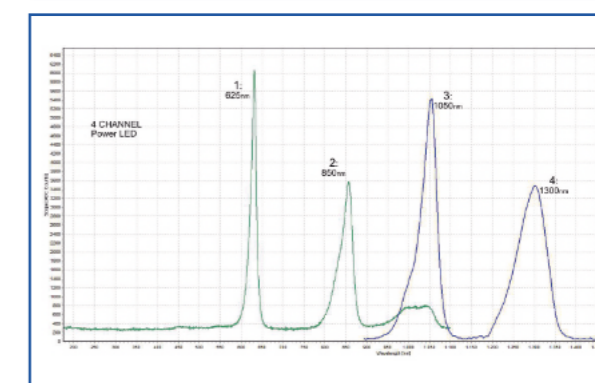
FIXING



BEAM ANGLES AND COVERS



WAVELENGTHS EXAMPLE



NEW SOLUTION
 DESIGN A NEW ONE
info@genesi-lux.it



SAMPLE
 TEST THE PRODUCT
info@genesi-lux.it



DOWNLOAD
 TECHNICAL SPECIFICATIONS
www.genesi-elettronica.com



REQUEST
 THE PRICE LIST
info@genesi-lux.it



24 Vdc

IP65 Protection Degree

CE RoHS

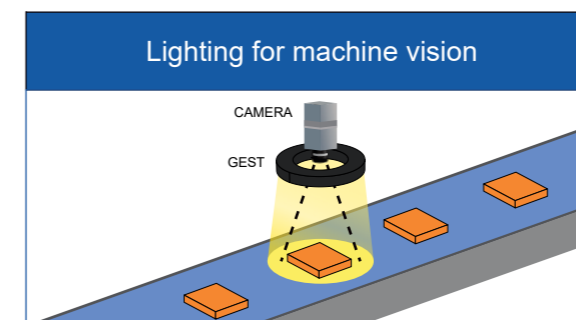
Ex. Code : **GESTXXX** -**YYY** -**CCC** -**WW1** -**WW2**

XXX	Base Diameters	-YYY	Led Colours	-CCC	Powers	-WW1	Cover variants
Exposed Leds		-6K	Base 6000K Cold White		Base 50 mA per led GEST42-74-120		Base IP20 exposed Leds GEST42-74-120
GEST42	42 mm	-4K	4000K Natural White		Base 50 mA per led GEST44-76-122		Base without lens GEST44-76-122-76-100
GEST74	74 mm	-365	UV 365 nm		Base 300 mA per led GEST76	-T	Transparent cover
GEST120	120 mm	-385	UV 385 nm		Base 500 mA per led GEST100	-OP	Opaline cover
With cover		-395	UV 395 nm	-30	30 mA per led	-ST	Satin cover
GEST44	44 mm	-405	UV 405 nm	-100	100 mA per led	-L20	20° lens, transparent cover
GEST76	76 mm	-450	450 nm Royal Blue	-1A	1 A per led	-L40	40° lens, transparent cover
GEST122	122 mm	-524	524 nm Green	-2A	2 A per led	-L60	60° lens, transparent cover
With lens + cover		-625	625 nm Red	-CCC	Current on demand	-P	Polarizing filter cover
GEST76	76 mm	-660	660 nm Deep Red			-OPP	Polarizing filter + Opaline cover
GEST100	100 mm	-730	730 nm IR			-WW1	Cover on demand
GESTXXX	Diameter on demand	-850	850 nm IR				
		-950	950 nm IR				
		-YYY	Colour on demand				
						-WW2	Cables
							Base 2 Mt cable 2 wires
							-M8 20 cm cable + M8 3P M
							-M12 20 cm cable + M12 5P M
							-S 2 Mt cable + logic start
							-M8S 20 cm cable + M8 3P M + logic start
							-M12S 20 cm cable + M12 5P M + logic start
							-5M 5 Mt 2P cable
							-5MS 5 Mt 3P cable + logic start
							-WW3 Supply connection on demand

Not all combinations are available

Cable extensions for M8 and M12: page 54

TYPICAL APPLICATIONS



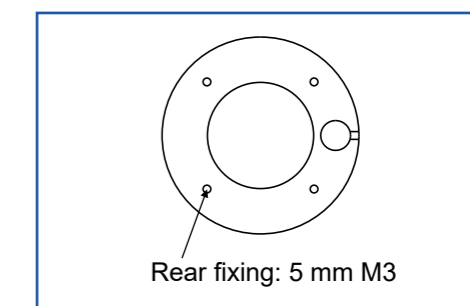
MODELS EXAMPLES

	Code	Description	Price
Base model	GEST100-6K-L20	Ring 100mm diameter White 6000K 20° Lens cover 1800Lm 500mA 12W 2Mt cable 2 Wires	640 €
Example	GEST42-625-M8	Ring 42mm diameter no cover IP20 Red 625nm 150mA 3,6W 20cm cable M8 3 poles	252 €
Example	GEST76-6K-OP-M8S	Ring 76mm diameter White 6000K Opaline cover IP65 1080Lm 300mA 7,2W 20cm M8 3 poles + logic start	290 €

MECHANICAL DRAWING

XXX	A	B	C
GEST42	10	42	10
GEST74	43	74	
GEST120	75	120	
GEST44	8	44	25
GEST76	41	76	
GEST122	73	122	
GEST76	41	76	
GEST100	50	100	

FIXING



BEAM ANGLES

EXPOSED LEDS	WITHOUT LENS	- T	-OP / -ST	-L20	-L40	-L60
120°	90°	90°	120°	20° Lens	40° Lens	60° Lens



NEW SOLUTION
 DESIGN A NEW ONE
info@genesi-lux.it



SAMPLE
 TEST THE PRODUCT
info@genesi-lux.it



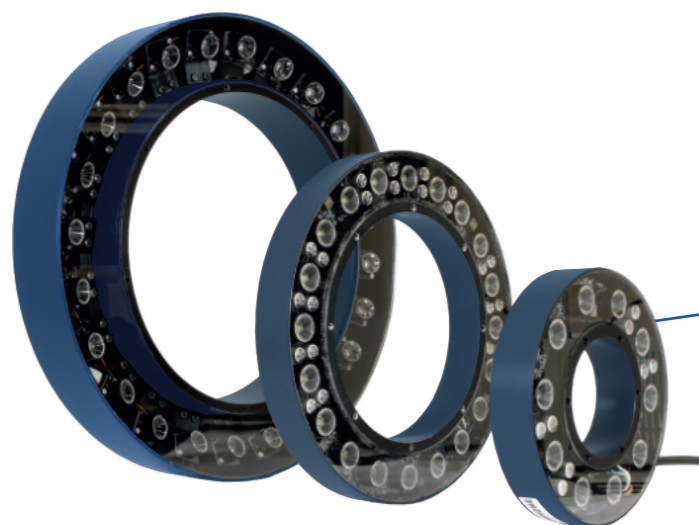
DOWNLOAD
 TECHNICAL SPECIFICATIONS
www.genesi-elettronica.com



REQUEST
 THE PRICE LIST
info@genesi-lux.it

GEST MEGA-RING

Blue Line



24 Vdc

IP65 Protection Degree

CE RoHS



Internal controller with 4 Driving modes	
1	100% Continuous use
2	200% Semi-continuous use
3	400% Strobe use
4	10-100% Analog Reg.

Ex. Code : **GESTXXX** -**YYY** -**WW1** -**WW2**

XXX	Base Diameters
GEST99	99 mm
GEST130	130 mm
GEST200	200 mm
GEST300	300 mm
GESTXXX	Diameter up to 500 mm

-YYY	Led Colours	
-6K	Base 6000K Cold White	White
-4K	4000K Natural White	White
-365	UV 365 nm	UV - A
-385	UV 385 nm	
-395	UV 395 nm	
-405	UV 405 nm	
-450	450 nm Royal Blue	Visibile
-524	524 nm Green	
-625	625 nm Red	
-660	660 nm Deep Red	Nir
-730	730 nm IR	
-850	850 nm IR	
-950	950 nm IR	
-1050	1050 nm SWIR	Swir
-1200	1200 nm SWIR	
-1300	1300 nm SWIR	
-1450	1450 nm SWIR	
-1550	1550 nm SWIR	
-YYY	Colour on demand	

-WW1	Cover variants
-T	Base Transparent cover (90°)
-OP	Opaline cover
-L10	10° lens + transparent cover
-L30	30° lens + transparent cover
-L60	60° lens + transparent cover
-A10	10° Inclination angle
-A25	25° Inclination angle
-A50	50° Inclination angle
-WW1	Cover on demand

-WW2	Cables
	20 cm cable + M12 5P M
-WW2	Supply connection on demand

Cable extensions for M8 and M12: page 54

Not all combinations are available

TYPICAL APPLICATIONS



PIN-OUT

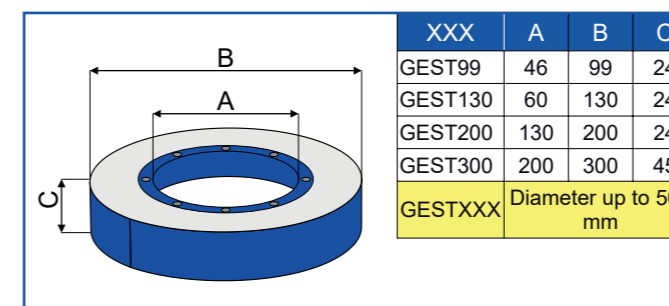


M12 5P Male Connector	
Pin 1	+24V
Pin 2	Start NPN < 1 to 0V
Pin 3	GND
Pin 4	Start PNP > 3 to 24V
Pin 5	1-10V Analog Reg.

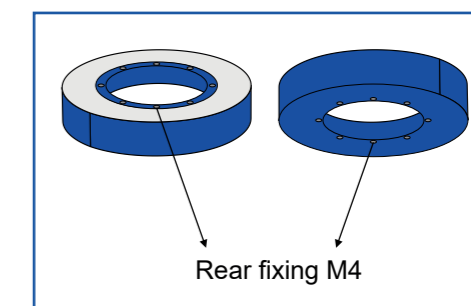
MODELS EXAMPLES

	Code	Description	Price
Base model	GEST200-6K-L10	Mega-ring 4 Driving Modes 200mm White 6000K 10° Lens transparent cover 4500/22500Lm 1,25/6,25A 30/150W 20cm cable M12 M 5P	1290 €
Example	GEST130-365-45T	Mega-ring 4 Driving Modes 130mm UV 365nm 45° Lens transparent cover 0,4/1,25A 10/30W 20cm cable M12 M 5P	1140 €
Example	GEST365-6K-L30-A40	Mega-ring 4 Driving Modes 365mm White 6000K 30° Lens transparent cover 4500/22500Lm Inclination angle 40° 1,25/6,25A 30/150W 20cm cable M12 M 5P	3860 €

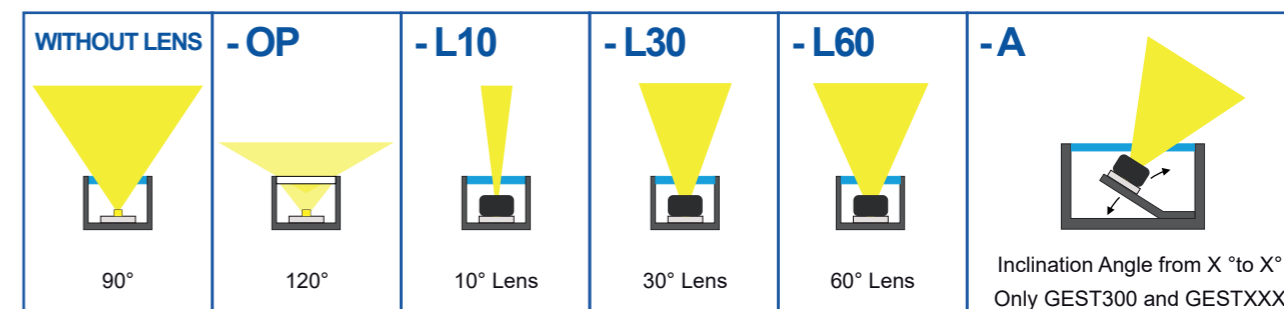
MECHANICAL DRAWING



FIXING



BEAM ANGLES



NEW SOLUTION
 DESIGN A NEW ONE
info@genesi-lux.it



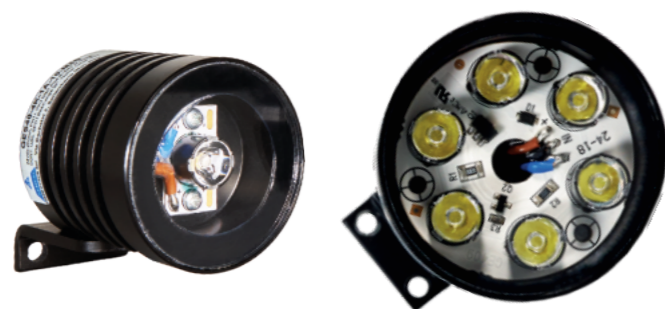
SAMPLE
 TEST THE PRODUCT
info@genesi-lux.it



DOWNLOAD
 TECHNICAL SPECIFICATIONS
www.genesi-elettronica.com



REQUEST
 THE PRICE LIST
info@genesi-lux.it



24 Vdc

IP67
Protection Degree

CE
RoHS

Ex. Code : **GESXXX** -**YYY** -**CCC** -**WW1** -**WW2**

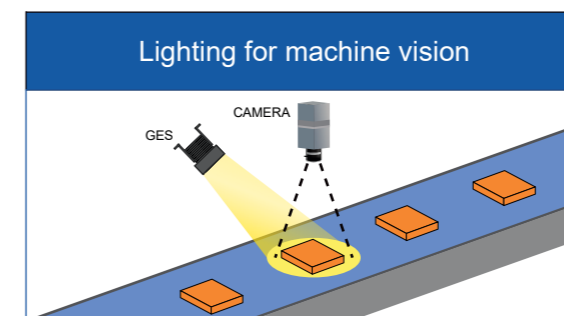
XXX	Base Diameters	-YYY	Led Colours	-CCC	Powers	-WW1	Cover variants
GES40	40 mm	-6K	Base 6000K Cold White		Base 175 mA GES40	-T	Base Transparent cover
GES50	50 mm	-4K	4000K Natural White		Base 250 mA GES50	-OP	Base Opaline cover
GES70	70 mm	-365	UV 365 nm		Base 500 mA GES70	-V	Pyrex glass 3 mm
GES90	90 mm	-385	UV 385 nm		Base 1 A GES90	-L10	10° lens + transparent cover
GESXX	Diameter on demand	-395	UV 395 nm	-CC	Current Control	-L20	20° lens + transparent cover
		-405	UV 405 nm			-L30	30° lens + transparent cover
		-RGB	RGB	-2A	2 A per led only strobe use	-L40	40° lens + transparent cover
		-450	450 nm Royal Blue	-4A	4 A per led only strobe use	-L60	60° lens + transparent cover
		-524	524 nm Green	-CCC	Current on demand	-P	Polarizing filter cover
		-625	625 nm Red			-TP	Polarizing filter + Transparent cover
		-660	660 nm Deep Red			-OPP	Polarizing filter + Opaline cover
		-730	730 nm IR			-WW1	Cover on demand
		-850	850 nm IR				
		-950	950 nm IR				
		-1050	1050 nm SWIR				
		-1200	1200 nm SWIR				
		-1300	1300 nm SWIR				
		-1450	1450 nm SWIR				
		-1550	1550 nm SWIR				
		-YYY	Colour on demand				

-WW2	Cables
	Base 2 Mt cable 2 wires
-M8	20 cm cable + M8 3P M
-M12	20 cm cable + M12 5P M
-S	2 Mt cable + logic start
-M8S	20 cm cable + M8 3P M + logic start
-M12S	20 cm cable + M12 5P M + logic start
-5M	5 Mt 2P cable
-5MS	5 Mt 3P cable + logic start
-WW2	Supply connection on demand

Not all combinations are available

Cable extensions for M8 and M12: page 54

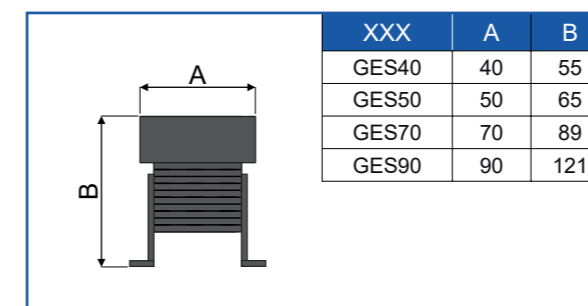
TYPICAL APPLICATIONS



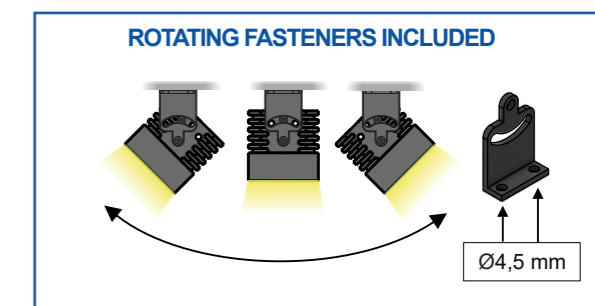
MODELS EXAMPLES

	Code	Description	Price
Base model	GES40-6K-L10-T	Spot light 40mm diameter White 6000K 10° Lens transparent cover 450Lm 0,175A 4W 2Mt cable 2 Wires	215 €
Example	GES70-625-L20-T-M12	Spot light 70mm diameter Red 625nm 20° Lens transparent cover 500mA 12W 20cm M12 cable 5 poles	570 €
Example	GES90-625-L20-T-M12	Spot light 90mm diameter Red 625nm 20° Lens transparent cover 1A 24W M12 cable 5 poles	780 €

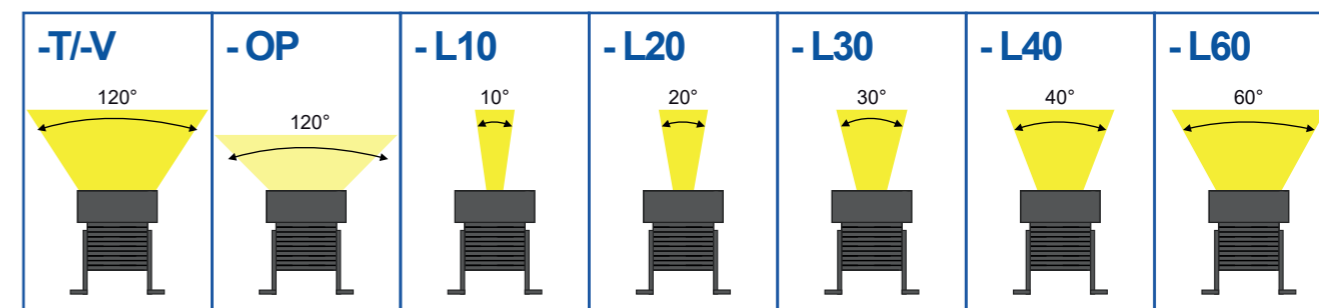
MECHANICAL DRAWING



FIXING

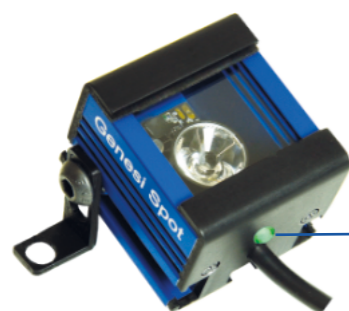


BEAM ANGLES AND COVERS



GS - GENESI SPOT

Blue Line



24 Vdc

IP54 Protection Degree

CE RoHS

Internal controller with 4 Driving modes	
1	100% Continuous use
2	200% Semi-continuous use
3	400% Strobe use
4	10-100% Analog Reg.

Ex. Code : **GSXXX**-**YYY**-**WW1**-**WW2**

XXX	Base Lengths
GSX1	5 cm
GSQ1	5 cm
GSQ2	9 cm
GSQ3	12 cm
GSXXX	from 5 cm to 50 cm on demand

-YYY	Led Colours	
-6K	Base 6000K Cold White	White
-4K	4000K Natural White	White
-365	UV 365 nm	UV - A
-385	UV 385 nm	
-395	UV 395 nm	
-405	UV 405 nm	
-450	450 nm Royal Blue	Visible
-524	524 nm Green	
-625	625 nm Red	
-660	660 nm Deep Red	Nir
-730	730 nm IR	
-850	850 nm IR	
-950	950 nm IR	Swir
-1050	1050 nm SWIR	
-1200	1200 nm SWIR	
-1300	1300 nm SWIR	Swir
-1450	1450 nm SWIR	
-1550	1550 nm SWIR	Swir
-1550	1550 nm SWIR	
-YYY	Colour on demand	

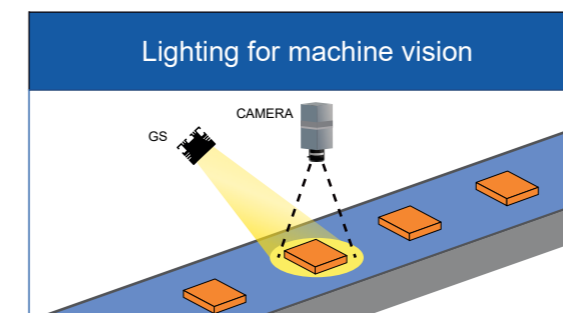
-WW1	Cover variants
-T	Base Transparent cover
-OP	Base Opaline cover
-ST	Satin cover
-L10	10° lens + transparent cover
-L30	30° lens + transparent cover
-L60	60° lens + transparent cover
-P	Polarizing filter cover
-WW1	Cover on demand

-WW2	Cables
	20 cm cable + M12 5P M
-WW2	Supply connection on demand

Cable extensions for M12: page 54

Not all combinations are available

TYPICAL APPLICATIONS



PIN-OUT

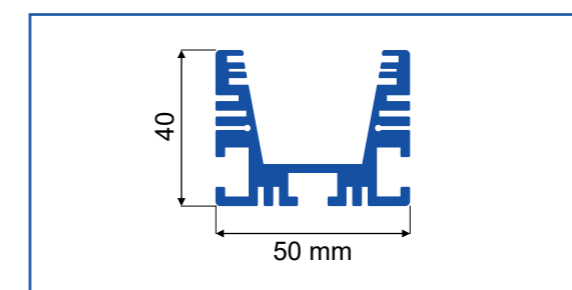


M12 5P Male Connector	
Pin 1	+24V
Pin 2	Start NPN < 1 to 0V
Pin 3	GND
Pin 4	Start PNP > 3 to 24V
Pin 5	1-10V Analog Reg.

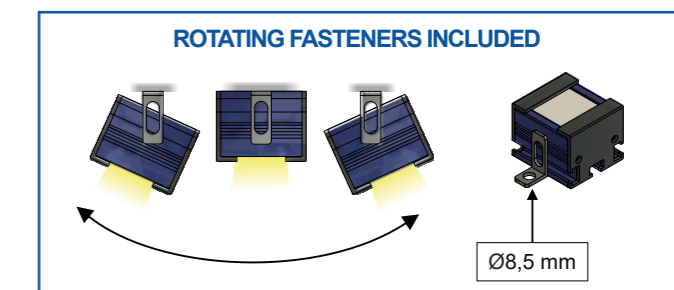
MODELS EXAMPLES

	Code	Description	Price
Base model	GSX1-6K-L10	Spot light 4 Driving Modes 50x50mm White 6000K 10° Lens transparent cover 600/2250Lm 0,2/0,65A 4/15W 20cm cable M12 M 5P	270 €
Example	GSX1-1450-L10	Spot 4 Driving Modes 50x50mm SWIR 1450nm 10° lens + transparent cover 0,1/0,3A 2/6W 20 cm cable M12 M 5P	460 €
Example	GSQ1-524-L30	Spot 4 core 4 Driving Modes 50x50mm Green 524nm 30° lens + transparent cover 0,4/2A 8/50W 20 cm cable M12 M 5P	530 €

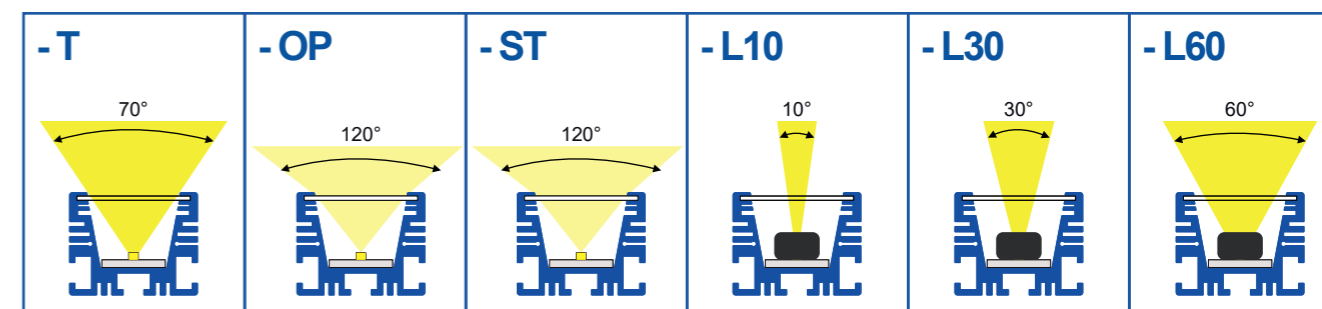
MECHANICAL DRAWING



FIXING



BEAM ANGLES AND COVERS



NEW SOLUTION
 DESIGN A NEW ONE
 info@genesi-lux.it



SAMPLE
 TEST THE PRODUCT
 info@genesi-lux.it



DOWNLOAD
 TECHNICAL SPECIFICATIONS
 www.genesi-elettronica.com



REQUEST
 THE PRICE LIST
 info@genesi-lux.it

GERE



24 Vdc

IP40 Protection Degree

CE RoHS

Ex. Code : **GEREAABB** -YYY -CCC -WW1 -WW2

AABB	Lengths	Heights
GERE1004	10 cm	4 cm
GERE1007	10 cm	7 cm
GERE1010	10 cm	10 cm
GERE2010	20 cm	10 cm
GERE3010	30 cm	10 cm
GERE0520	5 cm	20 cm
GERE2020	20 cm	20 cm
GERE3020	30 cm	20 cm
GERE3030	30 cm	30 cm
GERE4030	40 cm	30 cm
GERE4040	40 cm	40 cm
GERE5020	50 cm	20 cm
GERE6020	60 cm	20 cm
GERE5050	50 cm	50 cm
GERE6060	60 cm	60 cm
GEREAABB	from 4 cm to 200 cm on demand	

-YYY	Led Colours	
-6K	Base 6000K Cold White	White
-4K	4000K Natural White	White
-405	UV 405 nm	UV - A
-RGB	RGB	Visible
-450	450 nm Royal Blue	
-524	524 nm Green	
-625	625 nm Red	
-660	660 nm Deep Red	
-730	730 nm IR	Nir
-850	850 nm IR	
-950	950 nm IR	
-1050	1050 nm SWIR	Swir
-1200	1200 nm SWIR	
-1300	1300 nm SWIR	
-1450	1450 nm SWIR	
-1550	1550 nm SWIR	
-YYY	Colour on demand	

-CCC	Powers
	Base 30 mA per led UP TO GERE3020
	Base 20 mA per led FROM GERE3030
-CC	Current Control
-100	100 mA per led
-CCC	Current on demand

-WW1	Cover variants
	Base Opaline cover
-T	Transparent cover
-OPC	Collimating filter + Opaline cover
-TP	Polarizing filter + Transparent cover
-OPP	Polarizing filter + Opaline cover
-IP54	IP54
-WW1	Cover on demand

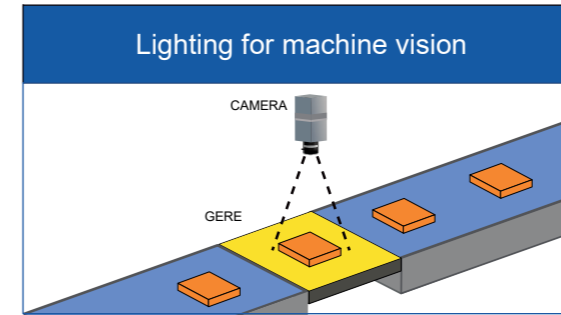
-WW2	Cables
	Base 2 Mt cable 2 wires
-M8	20 cm cable + M8 3P M
-M12	20 cm cable + M12 5P M
-S	2 Mt cable + logic start
-M8S	20 cm cable + M8 3P M + logic start
-M12S	20 cm cable + M12 5P M + logic start
-5M	5 Mt 2P cable
-5MS	5 Mt 3P cable + logic start
-WW2	Supply connection on demand

Cable extensions for M8 and M12: page 54

Up to 3 different colours in a single light

Not all combinations are available

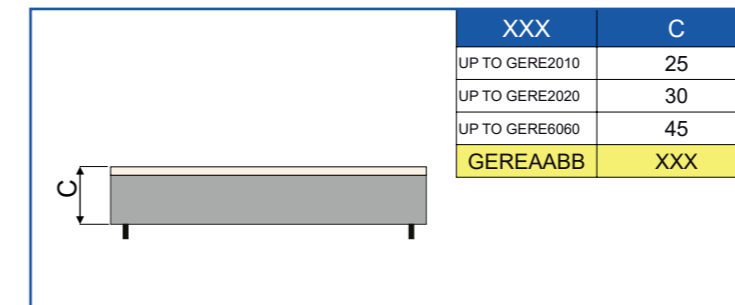
TYPICAL APPLICATIONS



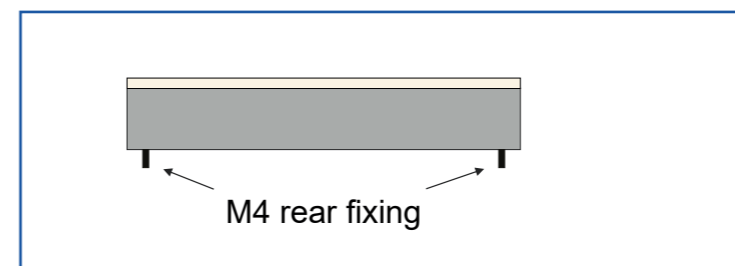
MODELS EXAMPLES

	Code	Description	Price
Base model	GERE2020-6K	Backlight 20x20cm White 6000K Opaline cover 720mA 8000 cd/m2 17,0W 2Mt cable 2 Wires	420 €
Example	GERE4040-850-S	Backlight 40x40cm IR 850nm Opaline cover 2A 50W 2Mt cable 3 poles + logic start	995 €
Example	GERE12080-6K-RA10	Backlight 120x80cm 6000K Opaline cover analog regulation 0-10V 13A 312W 2Mt cable 3 poles	5080 €

MECHANICAL DRAWING



FIXING



NEW SOLUTION
 DESIGN A NEW ONE
 info@genesi-lux.it



SAMPLE
 TEST THE PRODUCT
 info@genesi-lux.it

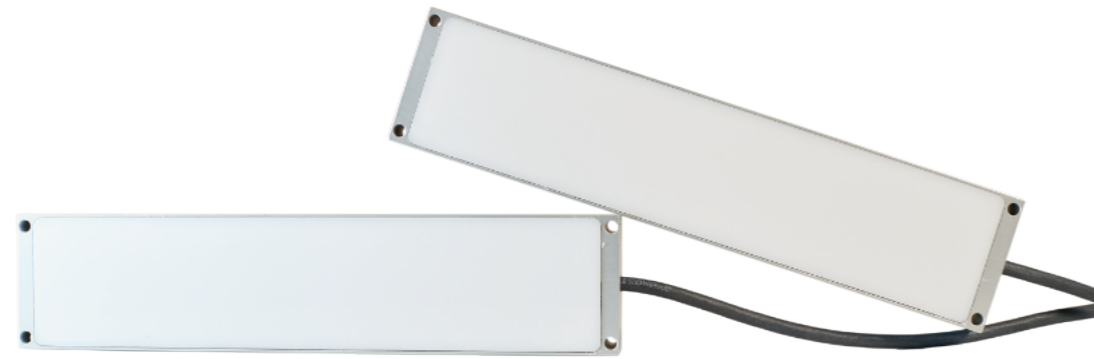


DOWNLOAD
 TECHNICAL SPECIFICATIONS
 www.genesi-elettronica.com



REQUEST
 THE PRICE LIST
 info@genesi-lux.it

GH



24 Vdc

IP65 Protection Degree

CE RoHS

Ex. Code : **GHAAXB** -YYY -CCC -WW1 -WW2

AAXB	Lengths	Heights
Thickness 12 mm		
GH29X24	2,9 cm	2,4 cm
GH50X36	5 cm	3,6 cm
GH60X42	6 cm	4,2 cm
GH94x42	9,4 cm	4,2 cm
GH94X80	9,4 cm	80 cm
GH124X116	12,4 cm	11,6 cm
Thickness 26 mm		
GH60X60	6 cm	6 cm
GH120X60	12 cm	6 cm
GH180X60	18 cm	6 cm
GH120X120	12 cm	12 cm
GH180X120	18 cm	12 cm
GH180X180	18 cm	18 cm
GH300X180	30 cm	18 cm
GH300X300	30 cm	30 cm
GH420X300	42 cm	30 cm
GH420X420	42 cm	42 cm
GHAABB	from 5 cm to 100 cm on demand	

-YYY	Led Colours
-6K	Base 6000K Cold White
-4K	4000K Natural White
-405	UV 405 nm
-RGB	RGB
-450	450 nm Royal Blue
-524	524 nm Green
-625	625 nm Red
-660	660 nm Deep Red
-730	730 nm IR
-850	850 nm IR
-950	950 nm IR
-1050	1050 nm SWIR
-1200	1200 nm SWIR
-1300	1300 nm SWIR
-1450	1450 nm SWIR
-1550	1550 nm SWIR
-YYY	Colour on demand

-CCC	Powers
	Base 25 mA per led GH model 12mm
	Base 30 mA per led GH model 26mm
-CC	Current Control
-15	15 mA per led
-100	100 mA per led
-300	300 mA per led
-CCC	Current on demand

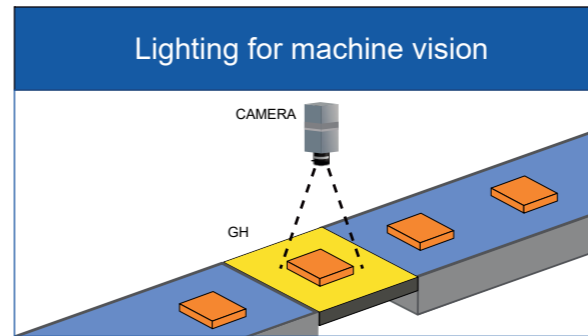
-WW1	Cover variants
	Base Opaline cover
-T	Transparent cover
-OPC	Collimating filter + Opaline cover
-TP	Polarizing filter + Transparent cover
-OPP	Polarizing filter + Opaline cover
-WW1	Cover on demand

-WW2	Cables
	Base 2 Mt cable 2 wires
-M8	20 cm cable + M8 3P M
-M12	20 cm cable + M12 5P M
-S	2 Mt cable + logic start
-M8S	20 cm cable + M8 3P M + logic start
-M12S	20 cm cable + M12 5P M + logic start
-5M	5 Mt 2P cable
-5MS	5 Mt 3P cable + logic start
-WW2	Supply connection on demand

Cable extensions for M8 and M12: page 54

Not all combinations are available

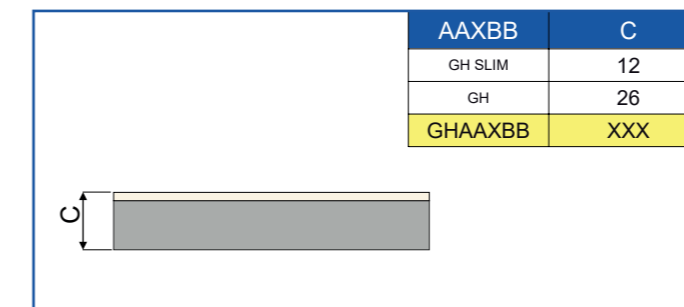
TYPICAL APPLICATIONS



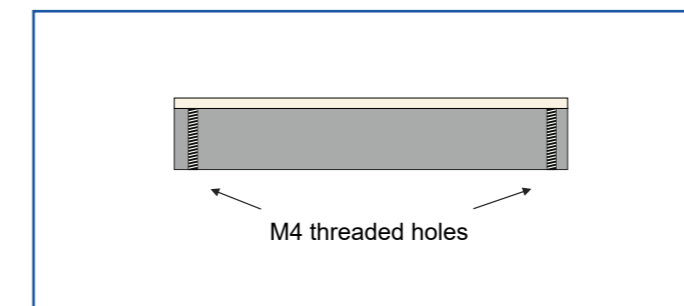
MODELS EXAMPLES

	Code	Description	Price
Base model	GH94X42-6K	Backlight 94x42mm h 12mm 6000K Opaline cover 900Lm 250mA 6,0W 2Mt cable 2 Wires	475 €
Example	GH190X100-6K	Backlight 190x100 mm h 25mm 6000K 300mA 7,2W 2Mt cable 2 Wires	680 €
Example	GH180X180-625-M12S	Backlight 180x180mm h 26mm Red 625nm Opaline cover 1,08A 26W 20cm M12 5 poles cable + logic start	1600 €

MECHANICAL DRAWING



FIXING



NEW SOLUTION
 DESIGN A NEW ONE
 info@genesi-lux.it



SAMPLE
 TEST THE PRODUCT
 info@genesi-lux.it



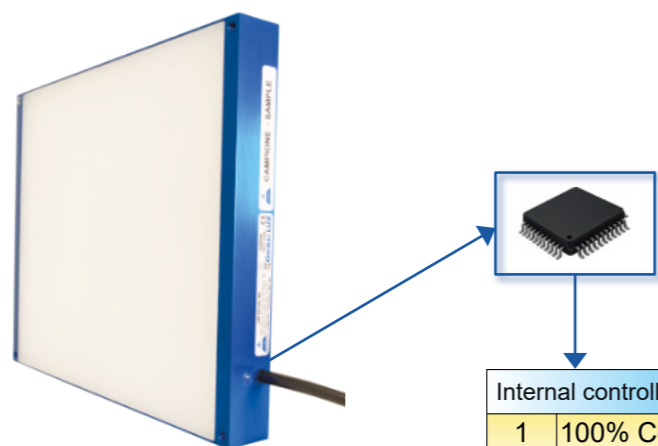
DOWNLOAD
 TECHNICAL SPECIFICATIONS
 www.genesi-elettronica.com



REQUEST
 THE PRICE LIST
 info@genesi-lux.it

GB - GENESI BACKLIGHT

Blue Line



24 Vdc

IP65 Protection Degree

CE RoHS

Internal controller with 4 Driving modes	
1	100% Continuous use
2	200% Semi-continuous use
3	400% Strobe use
4	10-100% Analog Reg.

Ex. Code : **GBAAABBB** -YYY -WW1 -WW2

AAABBB	Lengths	Heights
Thickness 26 mm		
GB060060	6 cm	6 cm
GB060120	6 cm	12 cm
GB060180	6 cm	18 cm
GB120120	12 cm	12 cm
GB120180	12 cm	18 cm
GB180180	18 cm	18 cm
GB180300	18 cm	30 cm
GB300300	30 cm	30 cm
GB300420	30 cm	42 cm
GB420420	42 cm	42 cm
GBAAABBB	From 6 cm to 100 cm on demand	

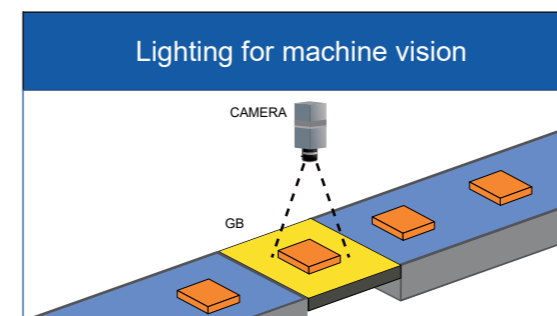
-YYY	Led Colours	
-6K	Base 6000K Cold White	White
-4K	4000K Natural White	White
-405	UV 405 nm	UV - A
-RGB	RGB	Visible
-450	450 nm Royal Blue	
-524	524 nm Green	
-625	625 nm Red	
-660	660 nm Deep Red	
-730	730 nm IR	Nir
-850	850 nm IR	
-950	950 nm IR	
-1050	1050 nm SWIR	Swir
-1200	1200 nm SWIR	
-1300	1300 nm SWIR	
-1450	1450 nm SWIR	
-1550	1550 nm SWIR	
-YYY	Colour on demand	

-WW1	Cover variants
	Base Opaline cover
-WW1	Cover on demand
-WW2	Cables
	20 cm cable + M12 5P M
-WW2	Supply connection on demand

Cable extensions for M12: page 54

Not all combinations are available

TYPICAL APPLICATIONS



PIN-OUT

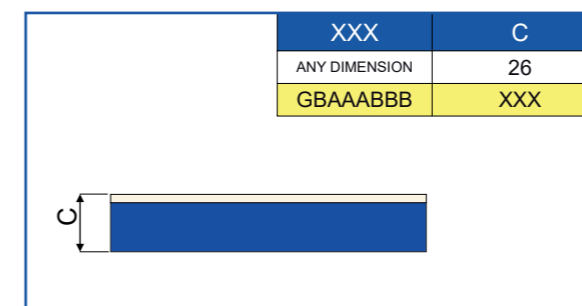


M12 5P Male Connector	
Pin 1	+24V
Pin 2	Start NPN < 1 to 0V
Pin 3	GND
Pin 4	Start PNP > 3 to 24V
Pin 5	1-10V Analog Reg.

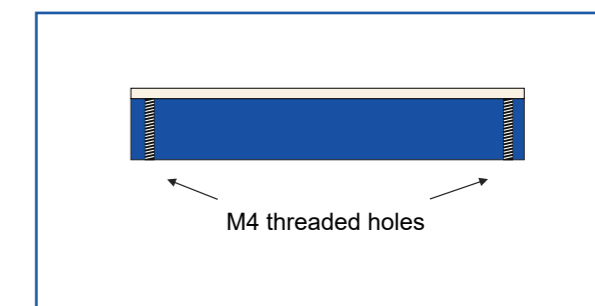
MODELS EXAMPLES

	Code	Description	Price
Base model	GB180180-6K	Backlight 4 Driving Modes 180x180mm White 6000K Opaline cover 3900/26000Lm 1,08/7,2A 26/173W 20cm cable M12 M 5P	1820 €
Example	GB120120-524	Backlight 4 Driving Modes 120x120mm GREEN 624nm Opaline cover 0,64/3,2A 15/77W 20cm cable M12 M 5P	1239 €
Example	GB180240-1550	Backlight 4 Driving Modes 180x240mm SWIR 1550nm Opaline cover 1,2/3,84A 29/92W 20cm cable M12 M 5P	5040€

MECHANICAL DRAWING



FIXING



ACCESSORIES

Code	Description
GBAAABBB-PX2-AP	Additional protection 2 mm transparent plexiglass + screws
GBAAABBB-P-AP	Additional protection 2 mm Transparent plexiglass + Polarizing Filter horizontal + screws
GBAAABBB-C-AP	Additional protection 2 mm Transparent plexiglass + Collimating Filter + screws



NEW SOLUTION
 DESIGN A NEW ONE
info@genesi-lux.it



SAMPLE
 TEST THE PRODUCT
info@genesi-lux.it



DOWNLOAD
 TECHNICAL SPECIFICATIONS
www.genesi-elettronica.com



REQUEST
 THE PRICE LIST
info@genesi-lux.it

GERE FLAT DOME



24 Vdc

IP40 Protection Degree

CE RoHS

Ex. Code : **GEREAABB** -YYY -CCC -HH -WW1 -WW2

AABB	Lengths	Heights
GERE3030	30 cm	30 cm
GERE4030	40 cm	30 cm
GERE4040	40 cm	40 cm
GERE5020	50 cm	20 cm
GERE6020	60 cm	20 cm
GERE5050	50 cm	50 cm
GERE6060	60 cm	60 cm
GEREAABB	from 5 cm to 200 cm on demand	

-YYY	Led Colours	
-6K	Base 6000K Cold White	White
-4K	4000K Natural White	White
-365	UV 365 nm	UV - A
-385	UV 385 nm	
-395	UV 395 nm	
-405	UV 405 nm	
-RGB	RGB	Visible
-450	450 nm Royal Blue	
-524	524 nm Green	
-625	625 nm Red	
-660	660 nm Deep Red	
-730	730 nm IR	Nir
-850	850 nm IR	
-950	950 nm IR	
-1050	1050 nm SWIR	Swir
-1200	1200 nm SWIR	
-1300	1300 nm SWIR	
-1450	1450 nm SWIR	
-1550	1550 nm SWIR	
-YYY	Colour on demand	

-CCC	Powers
	Base 30 mA per led UP TO GERE3020
	Base 20 mA per led FROM GERE3030
-CC	Current Control
-100	100 mA per led
-CCC	Current on demand

-HH	Holes for cameras
-H3	Diameter 30 mm
-H4	Diameter 40 mm
-H6	Diameter 60 mm
-HH	Hole on demand

-WW1	Cover variants
	Base Opaline cover
-T	Transparent cover
-OPC	Collimating filter + Opaline cover
-TP	Polarizing filter + Transparent cover
-OPP	Polarizing filter + Opaline cover
-IP54	IP54
-WW1	Cover on demand

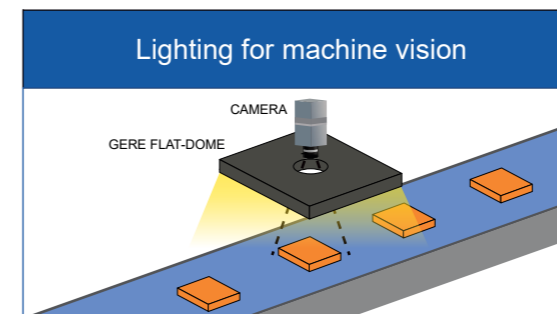
-WW2	Cables
	Base 2 Mt cable 2 wires
-M8	20 cm cable + M8 3P M
-M12	20 cm cable + M12 5P M
-S	2 Mt cable + logic start
-M8S	20 cm cable + M8 3P M + logic start
-M12S	20 cm cable + M12 5P M + logic start
-5M	5 Mt 2P cable
-5MS	5 Mt 3P cable + logic start
-WW2	Supply connection on demand

Cable extensions for M8 and M12: page 54

Up to 2 different colours in a single light

Not all combinations are available

TYPICAL APPLICATIONS



MODELS EXAMPLES

	Code	Description	Price
Base model	GERE3030-6K-H3	Flat dome 30x30cm White 6000K hole 30mm Opaline cover 8000cd/m2 960mA 23W 2Mt cable 2 Wires	650 €
Example	GERE4030-850-H6-M12S	Flat dome 40x30cm IR 850nm hole 60mm Opaline cover 1,44A 34W 20cm M12 5 poles cable+ start	950 €
Example	GERE6060-6K-H6-M12	Flat dome 60x60cm White 6000K hole 60mm Opaline cover 4,5A 107,5W 20cm M12 5 poles cable	1630 €

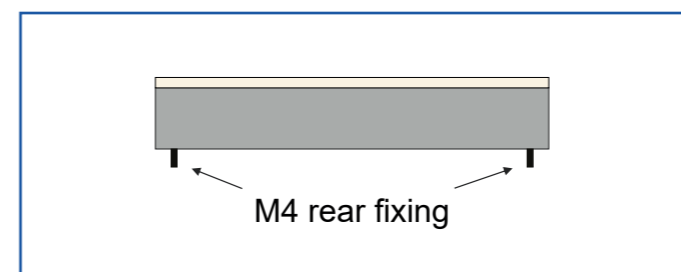
MECHANICAL DRAWING

AABB	C
UP TO GERE2010	25
UP TO GERE2020	30
UP TO GERE6060	45
GEREAABB	XXX

CAMERA HOLE

-HH	H
-H3	30
-H4	40
-H6	60
GEREAABB	XXX

FIXING



NEW SOLUTION
 DESIGN A NEW ONE
 info@genesi-lux.it



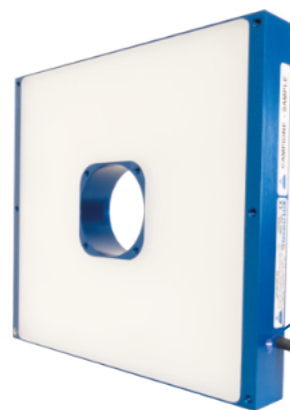
SAMPLE
 TEST THE PRODUCT
 info@genesi-lux.it



DOWNLOAD
 TECHNICAL SPECIFICATIONS
 www.genesi-elettronica.com



REQUEST
 THE PRICE LIST
 info@genesi-lux.it



24 Vdc

IP65
Protection Degree

CE
RoHS

Internal controller with 4 Driving modes	
1	100% Continuous use
2	200% Semi-continuous use
3	400% Strobe use
4	10-100% Analog Reg.

Ex. Code : **GFAAABBB** -YYY -WW1 -WW2

AAABBB	Lengths	Heights
Thickness 26 mm		
GF180180	18 cm	18 cm
GF180300	18 cm	30 cm
GF240240	24 cm	24 cm
GF300300	30 cm	30 cm
GF300420	30 cm	42 cm
GF420420	42 cm	42 cm
GF480480	48 cm	48 cm
GFAAABBB	From 12 cm to 100 cm on demand	

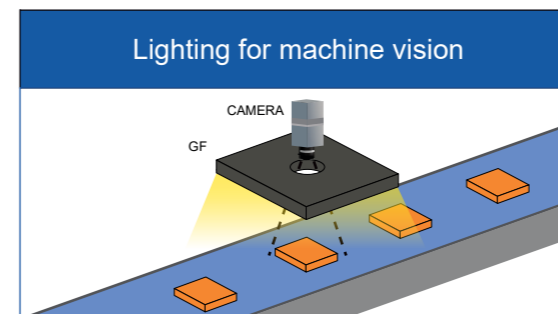
-YYY	Led Colours	
-6K	Base 6000K Cold White	White
-4K	4000K Natural White	White
-365	UV 365 nm	UV - A
-385	UV 385 nm	
-395	UV 395 nm	
-405	UV 405 nm	
-450	450 nm Royal Blue	Visible
-524	524 nm Green	
-625	625 nm Red	
-660	660 nm Deep Red	Nir
-730	730 nm IR	
-850	850 nm IR	
-950	950 nm IR	
-1050	1050 nm SWIR	Swir
-1200	1200 nm SWIR	
-1300	1300 nm SWIR	
-1450	1450 nm SWIR	
-1550	1550 nm SWIR	
-YYY	Colour on demand	

-WW1	Cover variants
	Base Opaline cover
-WW1	Cover on demand
-WW2	Cables
	20 cm cable + M12 5P M
-WW2	Supply connection on demand

Cable extensions for M12: page 54

Not all combinations are available

TYPICAL APPLICATIONS



PIN-OUT

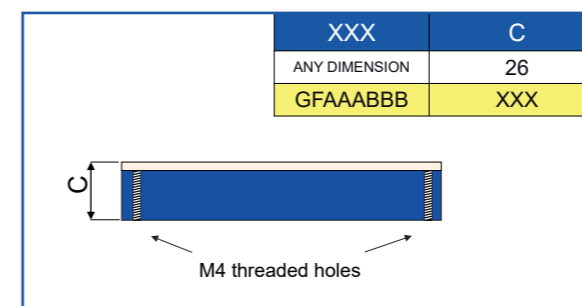


M12 5P Male Connector	
Pin 1	+24V
Pin 2	Start NPN < 1 to 0V
Pin 3	GND
Pin 4	Start PNP > 3 to 24V
Pin 5	1-10V Analog Reg.

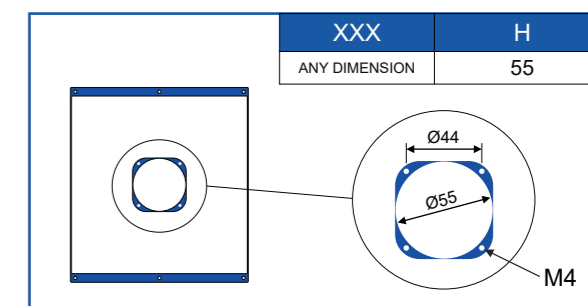
MODELS EXAMPLES

	Code	Description	Price
Base model	GF180180-6K	Flat dome 4 Driving Modes 180x180mm Hole 55mm White 6000K Opaline cover 3450/23100Lm 0,96/6,4A 23/154W 20cm cable M12 M 5P	1920 €
Example	GF180180-850	Flat dome 4 Driving Modes 180x180mm Hole 55mm IR 850nm Opaline cover 0,8/2,56A 19,2/61,5W 20cm cable M12 M 5P	2110 €
Example	GF480480-625	Flat dome 4 Driving Modes 480x480mm Hole 55mm RED 625nm Opaline cover 5,04/25,2A 121/605W 20cm cable M12 M 5P	6360 €

MECHANICAL DRAWING AND FIXING



CAMERA HOLE



ACCESSORIES

Code	Description
GFAAABBB-PX2-AP	Additional protection 2 mm transparent plexiglass + screws
GFAAABBB-P-AP	Additional protection 2 mm Transparent plexiglass + Polarizing Filter horizontal + screws



NEW SOLUTION
DESIGN A NEW ONE
info@genesi-lux.it



SAMPLE
TEST THE PRODUCT
info@genesi-lux.it

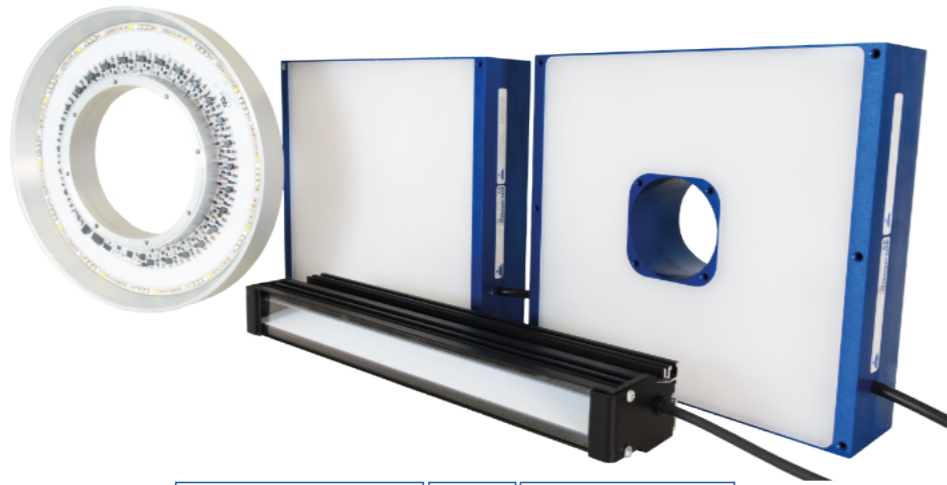
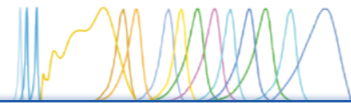


DOWNLOAD
TECHNICAL SPECIFICATIONS
www.genesi-elettronica.com



REQUEST
THE PRICE LIST
info@genesi-lux.it

MULTISPECTRAL LIGHTING



24 Vdc

IP54
Protection Degree
GEVXD

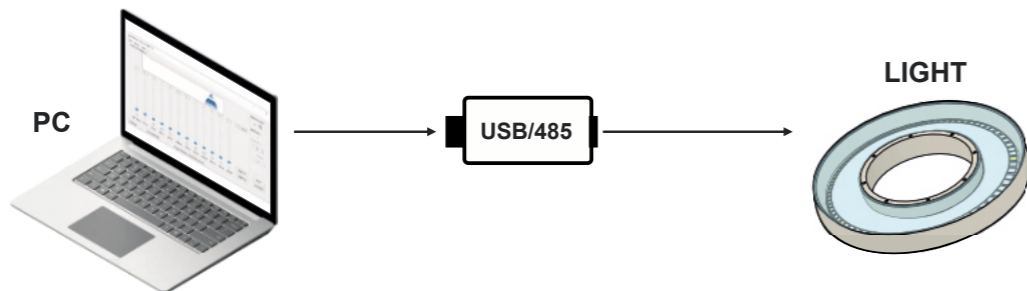
IP65
Protection Degree
GEST
GB - GF

CE
RoHS

Ex. Code : **MODELXXX-MS-YYY-ZZZ**

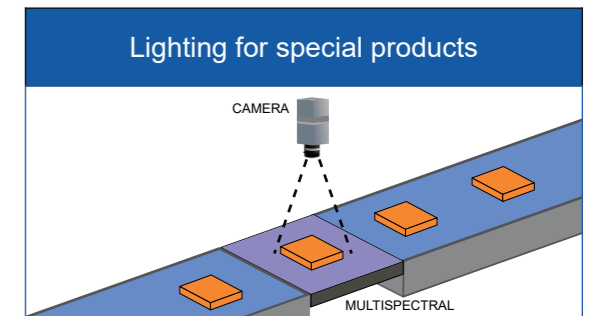
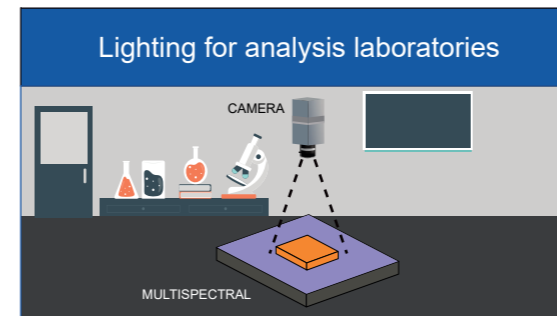
XXX	Base Length	
	Bar Light	
GEVXD28	28 cm	
XXX	Base Diameter	
	Ring Light	
GEST220	22 cm	
XXX	Lengths	Heights
	Backlight	
GB210280	21 cm	28 cm
	Flat Dome	
GF300300	30 cm	30 cm
GXXX	Dimensions on demand	

-YYY-ZZZ	TABLES
-400-1650	Base TABLE 1
-365-980	Base TABLE 2
-RGB-1550	Base TABLE 3
-400-1900	Base TABLE 4
-YYY-ZZZ	Table on demand



Not all combinations are available

TYPICAL APPLICATIONS



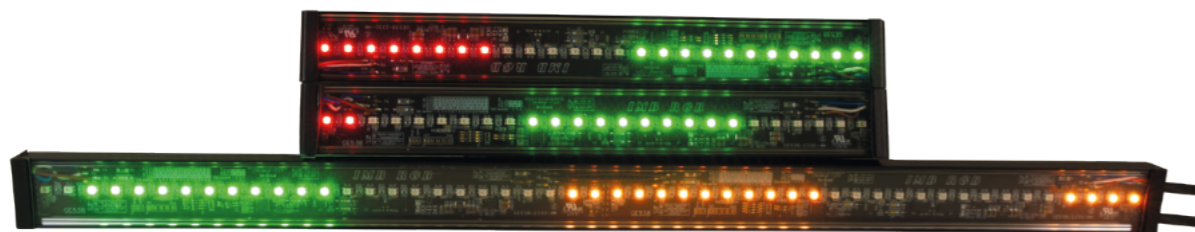
MODELS EXAMPLES

	Code	Description	Price
Base model	GEVXD28-MS-400-1650	12 Wavelengths Multispectral Bar light 28cm Lens 5° 400-1650nm 50W 20cm cable M12 5 poles Table 1	3100 €
Base model	GEST220-MS-365-980	12 Wavelengths Multispectral Ring light 220cm diameter 365-980nm 100W 20cm cable M12 5 poles Table 2	4600 €
Base model	GB210280-MS-RGB-1550	12 Wavelengths Multispectral Backlight 21x28cm 400-1650nm 150W 20cm cable M12 5 poles Table 3	8500 €
Base model	GF300300-MS-400-1900	Multispectral 12 Wavelengths Flat Dome light 30x30cm 400-1650nm 200W 20cm cable M12 5 poles Table 4	11200 €
Example	GEVXD108-MS-400-1650	12 Wavelengths Multispectral Bar light 108 cm 400-1650nm 200W 20cm cable M12 5 poles Table 1	9250 €
Example	GB300400-MS-400-1900	12 Wavelengths Multispectral Backlight 40x30cm 400-1900 nm 200W 20cm cable M12 5 poles Table 4	13000 €

TABLES

LED position N° 18 for each position	BASE TABLES				CUSTOM TABLE
	TABLE 1 WAVELENGTHS	TABLE 2 WAVELENGTHS	TABLE 3 WAVELENGTHS	TABLE 4 WAVELENGTHS	TABLE XXX WAVELENGTHS
1	400-700 nm	365 nm	450 nm	400-700 nm	nm
2	730 nm	385 nm	520 nm	730 nm	nm
3	780 nm	395 nm	625 nm	780 nm	nm
4	850 nm	400-700 nm	400-700 nm	850 nm	nm
5	940 nm	450 nm	730 nm	940 nm	nm
6	1050 nm	520 nm	850 nm	1050 nm	nm
7	1150 nm	625 nm	940 nm	1200 nm	nm
8	1200 nm	730 nm	1050 nm	1300 nm	nm
9	1300 nm	780 nm	1200 nm	1450 nm	nm
10	1450 nm	850 nm	1300 nm	1550 nm	nm
11	1550 nm	940 nm	1450 nm	1650 nm	nm
12	1650 nm	980 nm	1550 nm	1900 nm	nm

IMB



24 Vdc

IP65 Protection Degree

CE RoHS

Optional EtherNET External controller

Optional EtherCAT External controller

Optional IO-Link External controller

Ex. Code : **IMBXXX** -RGB -WW1 -WW2

XXX	Base Lengths
IMB25	25 cm
IMB50	50 cm
IMB100	100 cm
IMB150	150 cm
IMB200	200 cm
IMB250	250 cm
IMB300	300 cm
IMB400	400 cm
IMBXXX	from 25 cm to 1600* cm on demand

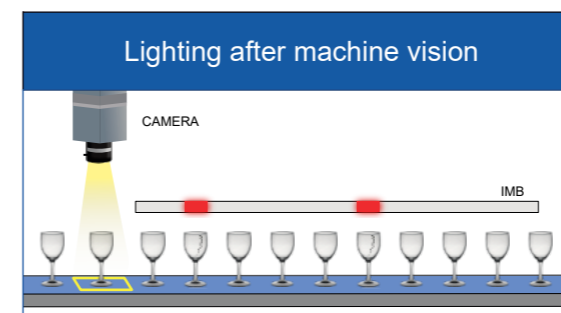
-YYY	Led Colours
-RGB	RGB 1 cm PER LED Visible
-RGB	RGB1 4 mm PER LED Visible

-WW1	Cover variants
-OP	Base Opaline cover
-T	Base Transparent cover
-ST	Satin cover
-OPB	Black opaline cover
-WW1	Cover on demand

-WW2	Fixing variants
-US	Base Rear cable + rear fixing
-UL	Side cable + rear fixing
-UA	Axial cable + base fixing
-WW2	Fixing variants on demand

Cable extensions for M12: page 54

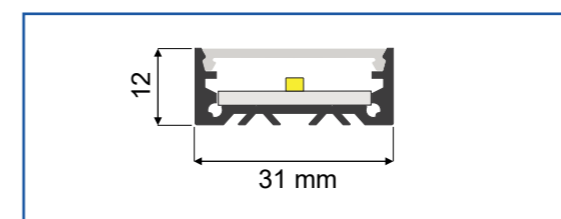
TYPICAL APPLICATIONS



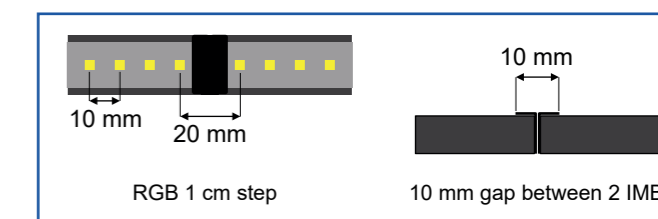
MODELS EXAMPLES

	Code	Description	Price
Base model	IMB100-RGB-T-US	Industrial metric led bar 100cm RGB transparent cover 1A 24W Rear fixing & cable 20cm M12 5P M + F	400 €
Example	IMB400-RGB-T-US	Industrial metric led bar 400cm RGB transparent cover 4A 96W Rear fixing & cable 20cm M12 5P M + F	1480 €
Example	IMB1000-RGB-T-US	Industrial metric led bar 10Mt (4+2+4) RGB transparent cover 10A 240W Rear fixing & 3 cable 20cm M12 5P M + F	3640 €

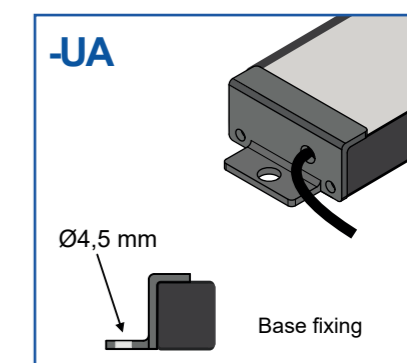
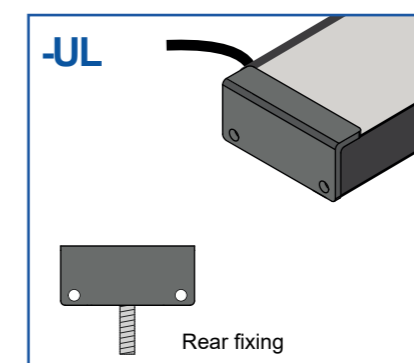
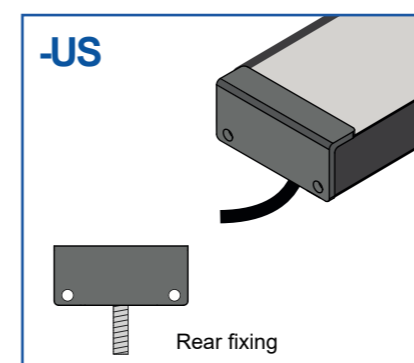
MECHANICAL DRAWING



LEDs PLACEMENT



FIXING



*The maximum length is 16Mt with modular parts whose maximum length is 4Mt.

Not all combinations are available



NEW SOLUTION
DESIGN A NEW ONE
info@genesi-lux.it



SAMPLE
TEST THE PRODUCT
info@genesi-lux.it



DOWNLOAD
TECHNICAL SPECIFICATIONS
www.genesi-elettronica.com



REQUEST
THE PRICE LIST
info@genesi-lux.it

INTERNAL CONTROLLER

All Genesi range of solutions have a trigger as a logical driving option, for example: S, M8S, M12S. They enable the lighting with a trigger from 15 to 24 V.

The new generations of Genesi solutions which have been introduced lately (GP, GEST Mega-Ring, GB, GF and GS) have an internal controller that allows to have 4 driving modes and ensures the monitoring of the safety time and temperature.

Internal Controller with 4 Driving modes

1	100% Continuous use
2	200% Semi-continuous use
3	400% Strobe use
4	10-100% Analog Reg


Some of our solutions are equipped with an

Internal Controller with four Driving modes.


← Find this table in the related products pages.

EXTERNAL CONTROLLERS


DIMMER PWM HUMAN VISION ONLY, NOT RECOMMENDED FOR MACHINE VISION

	Code	Description	Price
	-AS5-DIM1	Dimmer 1 way Controller -AS5-DIM1 to be integrated into another product	60 €
	-AS5-DIM2	Dimmer 2 way Controller -AS5-DIM2 to be integrated into another product	60 €


STROBE CONTROLLER

	Code	Description	Price
	-AS5-10%	Strobe Voltage Controller -AS5 DT max 10% (200mS average) to be integrated into another product	60 €
	GEIL10-AS5-10%-M8	Strobe Voltage Controller GEIL10 & AS5 max 3A DT max 10% (200mS average) 20cm M8 3 p M/F	110 €
	GEIL10-AS5-10%-M12	Strobe Voltage Controller GEIL10 & AS5 max 5A DT max 10%(200mS average) 20cm M12 5 p M/F	120 €

STROBE CONTROLLER WITH BUFFER

	Code	Description	Price
	GE-ABS50-10X-20	Strobe Voltage Controller , Buffer 50A /1ms 24Vdc , DT max 10% (200mS average) Max cycle freq. 10Khz	260 €
	GE-ABS50-10X-OPT	Strobe Voltage Controller , Buffer 50A /1ms 24Vdc , DT max 10% (200mS average) opto isolated input , Max cycle freq. 10Khz	280 €
	GE-ABS80B-10X-20	Strobe Voltage Controller , Buffer 80A /1ms 24Vdc , DT max 10% (200mS average) opto isolated input , Max cycle freq. 10Khz	390 €

PROGRAMMABLE VOLTAGE CONTROLLER

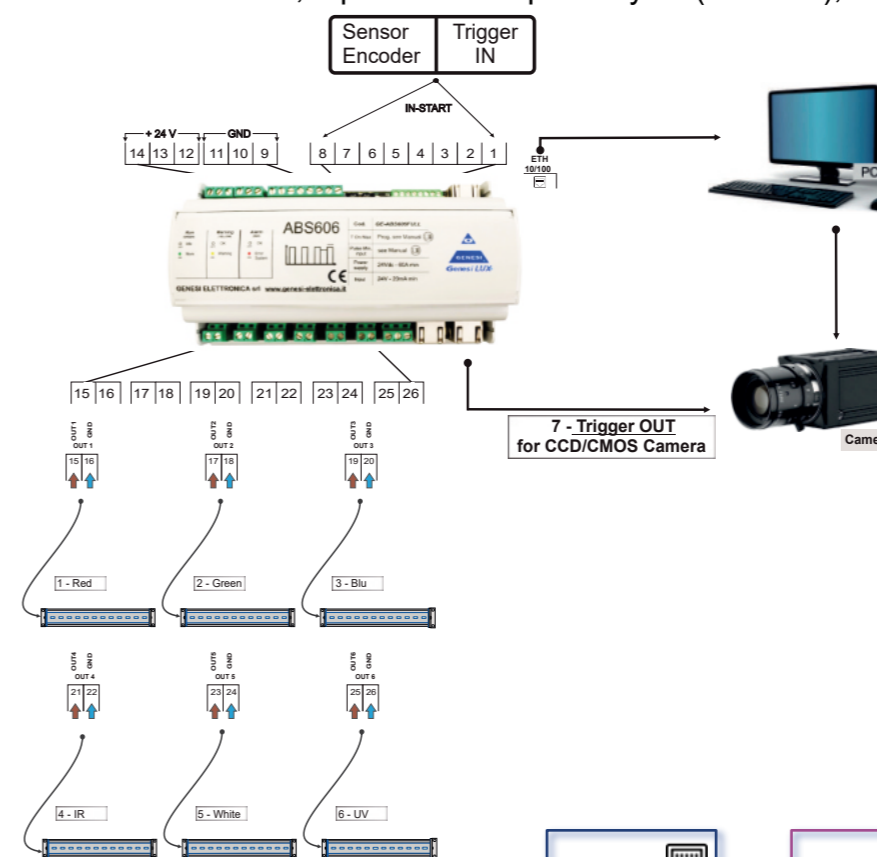
	Code	Description	Price
	GE-ABS604E	4 channels Strobe Voltage Controller Buffer 60A /1ms 24Vdc Programmable ETH Max cycle freq. 34Khz	850 €
	GE-ABS606C-E	6+1 channels Strobe Voltage Controller Buffer 60A /1ms 24Vdc Programmable ETH Max cycle freq. over 500Khz	1380 €
	GE-ABS606C-CAT	6+1 channels Strobe Voltage Controller , Buffer 60A /1ms 24Vdc Programmable Ethercat Max cycle freq. over 500Khz	1600 €

GE-ABS606C SLAVE CAMERA CONFIGURATION MODE

- Camera controller for industrial lighting to drive up to 6 LED lights and 1 channel for the camera;
- Max 12A per LED channel (total input current: max 60A);
- Advanced programmable timing feature;
- 10 nS resolution, 1 μS minimum pulse cycle (ABS606);



New FPGA system to control high speed illuminators, NANODIMMER function.



Genesi Elettronica is a member of EtherCAT Technology Group. We can provide custom solutions with this standard.

I/O CONVERTER


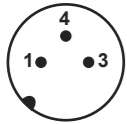

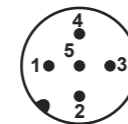

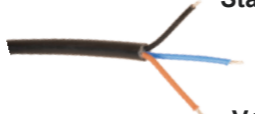


Converter	Code	Description	Price
RS485 converter	GE-RS485X2-ETH	Interface Module: ETH / 2 x RS485 24V 0,4 A for Industrial Metric Led Bar and more	190 €
RS485 converter	GE-RS485X2-ECAT	Interface Module: Ethercat / 2 x RS485 24V 0,4 A for Industrial Metric Led Bar and more	240 €
IO-Link converter	GE-4OUT-IO-LINK	Interface Module: IO-LINK 4 Digital Output 2A 24V for Led Bar and more	140 €
IO-Link converter	GE-R485-IO-LINK	Interface Module: IO-LINK 1x RS485 24V 0,4 A for Industrial Metric Led Bar and more	210 €
IO-Link converter	GE-4OUT-R485-IO-LINK	Interface Module: IO-LINK 4 Digital Output 2A 24V for Led Bar and more + 1x RS485 24V 0,4 A for Industrial Metric Led Bar and more	250 €

CABLES TO BE ADDED TO THE CODE

Code	Description	Price
 COD.XXX-YY-WW- M8	20cm PVC cable + M8 3 P M	9 €
COD.XXX-YY-WW- M8S	20cm PVC cable + M8 3 P M + Logic start	15 €
 COD.XXX-YY-WW- M12	20cm PVC cable + M12 5 P M	10 €
COD.XXX-YY-WW- M12S	20cm PVC cable + M12 5 P M + Logic start	16 €
 COD.XXX-YY-WW- S	2Mt cable 3 P + Logic start	8 €
 COD.XXX-YY-WW- 5M	5Mt cable 2 P	7 €
 COD.XXX-YY-WW- 5MS	5Mt cable 3 P + Logic start	9 €
 COD.XXX-YY-WW- 10M	10Mt cable 2 P	14 €
 COD.XXX-YY-WW- 10MS	10Mt cable 3 P + Logic start	18 €

PIN OUT

<p>-M8 / -M8S</p>   <table border="1"> <thead> <tr> <th colspan="2">M8 - Male 3 Poles</th> </tr> </thead> <tbody> <tr><td>1</td><td>+24 V</td></tr> <tr><td>3</td><td>GND</td></tr> <tr><td>4</td><td>NC</td></tr> </tbody> </table> <table border="1"> <thead> <tr> <th colspan="2">M8S - Male 3 Poles</th> </tr> </thead> <tbody> <tr><td>1</td><td>+24 V</td></tr> <tr><td>3</td><td>GND</td></tr> <tr><td>4</td><td>Start</td></tr> </tbody> </table>	M8 - Male 3 Poles		1	+24 V	3	GND	4	NC	M8S - Male 3 Poles		1	+24 V	3	GND	4	Start	<p>-M12 / -M12S</p>   <table border="1"> <thead> <tr> <th colspan="2">Under 4 A</th> <th colspan="2">Over 4 A</th> </tr> <tr> <th colspan="2">M12 - Male 5 Poles</th> <th colspan="2">M12 - Male 5 Poles</th> </tr> </thead> <tbody> <tr><td>1</td><td>+24 V</td><td>1</td><td>+24 V</td></tr> <tr><td>2</td><td>NC</td><td>2</td><td>+24 V</td></tr> <tr><td>3</td><td>GND</td><td>3</td><td>GND</td></tr> <tr><td>4</td><td>NC</td><td>4</td><td>NC</td></tr> <tr><td>5</td><td>NC</td><td>5</td><td>GND</td></tr> </tbody> </table> <table border="1"> <thead> <tr> <th colspan="2">Under 4 A</th> <th colspan="2">Over 4 A</th> </tr> <tr> <th colspan="2">M12S - Male 5 Poles</th> <th colspan="2">M12S - Male 5 Poles</th> </tr> </thead> <tbody> <tr><td>1</td><td>+24 V</td><td>1</td><td>+24 V</td></tr> <tr><td>2</td><td>NC</td><td>2</td><td>+24 V</td></tr> <tr><td>3</td><td>GND</td><td>3</td><td>GND</td></tr> <tr><td>4</td><td>Start PNP</td><td>4</td><td>Start PNP</td></tr> <tr><td>5</td><td>NC</td><td>5</td><td>GND</td></tr> </tbody> </table>	Under 4 A		Over 4 A		M12 - Male 5 Poles		M12 - Male 5 Poles		1	+24 V	1	+24 V	2	NC	2	+24 V	3	GND	3	GND	4	NC	4	NC	5	NC	5	GND	Under 4 A		Over 4 A		M12S - Male 5 Poles		M12S - Male 5 Poles		1	+24 V	1	+24 V	2	NC	2	+24 V	3	GND	3	GND	4	Start PNP	4	Start PNP	5	NC	5	GND
M8 - Male 3 Poles																																																																									
1	+24 V																																																																								
3	GND																																																																								
4	NC																																																																								
M8S - Male 3 Poles																																																																									
1	+24 V																																																																								
3	GND																																																																								
4	Start																																																																								
Under 4 A		Over 4 A																																																																							
M12 - Male 5 Poles		M12 - Male 5 Poles																																																																							
1	+24 V	1	+24 V																																																																						
2	NC	2	+24 V																																																																						
3	GND	3	GND																																																																						
4	NC	4	NC																																																																						
5	NC	5	GND																																																																						
Under 4 A		Over 4 A																																																																							
M12S - Male 5 Poles		M12S - Male 5 Poles																																																																							
1	+24 V	1	+24 V																																																																						
2	NC	2	+24 V																																																																						
3	GND	3	GND																																																																						
4	Start PNP	4	Start PNP																																																																						
5	NC	5	GND																																																																						
<p>-5M / -10M</p>  <p>GND (Blue) V+ (Brown)</p>	<p>-S / -5MS / -10MS</p>  <p>Start (Black) GND (Blue) V+ (Brown)</p>																																																																								

FEMALE EXTENSION CABLES

Code	Description	Price
 GE-M8F-3X035-2M	Female extension PVC Cable 3P 2 Mt 0,35mm2 + M8 3P Female	13 €
GE-M8F-3X035-5M	Female extension PVC Cable 3P 5 Mt 0,35mm2 + M8 3P Female	22 €
GE-M8F-3X035-10M	Female extension PVC Cable 3P 10 Mt 0,35mm2 + M8 3P Female	32 €
 GE-M12F-5X050-2M	Female extension PVC Cable 5P 2 Mt 0,5mm2 + M12 5P Female	14 €
GE-M12F-5X050-5M	Female extension PVC Cable 5P 5 Mt 0,5mm2 + M12 5P Female	24 €
GE-M12F-5X050-10M	Female extension PVC Cable 5P 10 Mt 0,5mm2 + M12 5P Female	35 €
 GE-M12F-8X020-2M	Female extension PVC Cable 8P 2 Mt 0,2mm2 + M12 8P Female	42 €

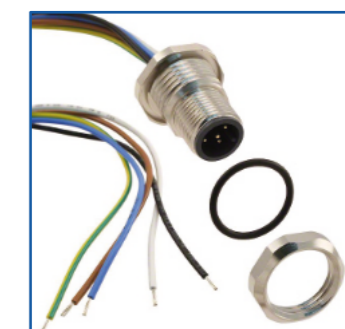
ON REQUEST SOME EXAMPLES



M8 4 poles

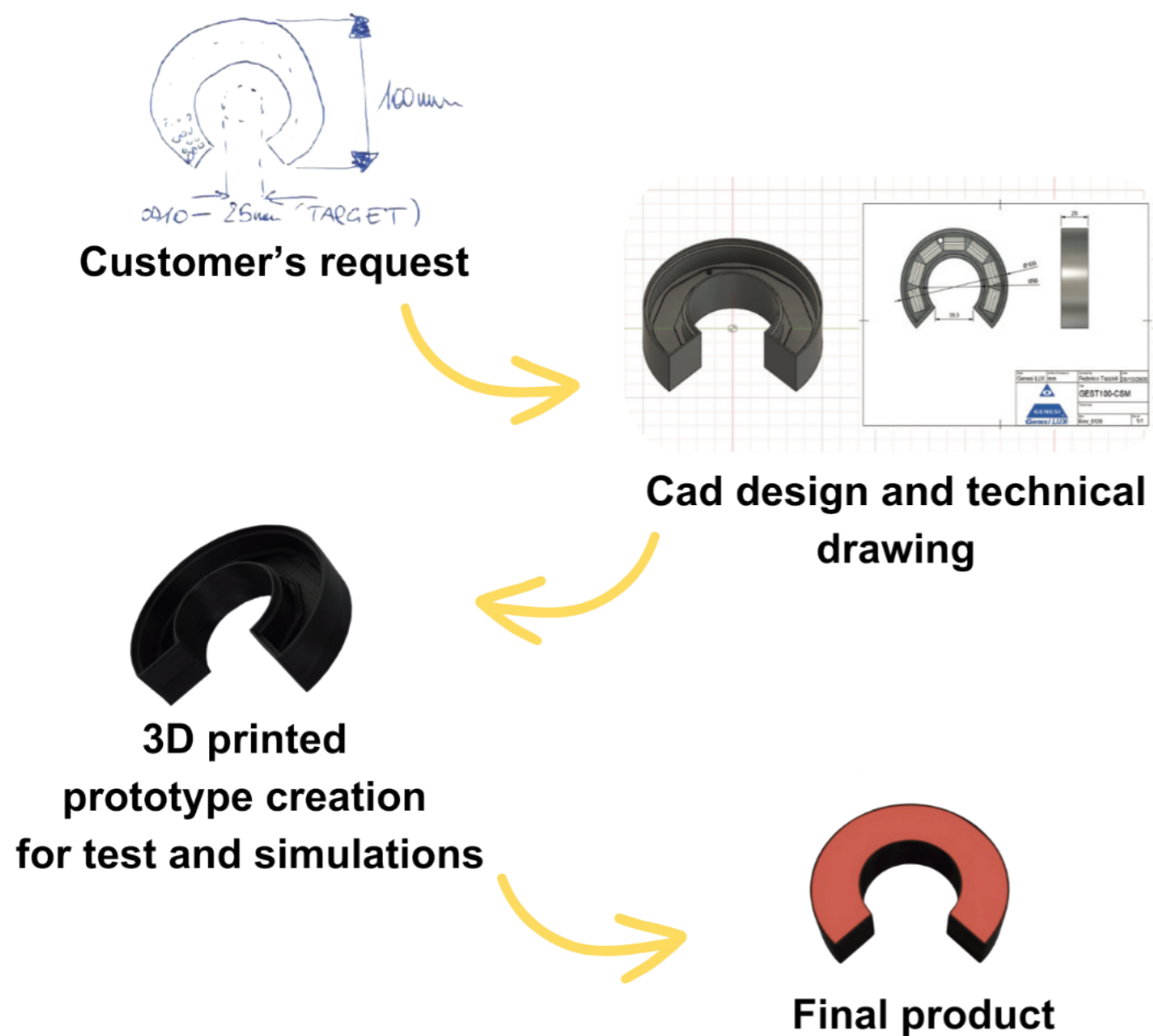


9 poles panel connector



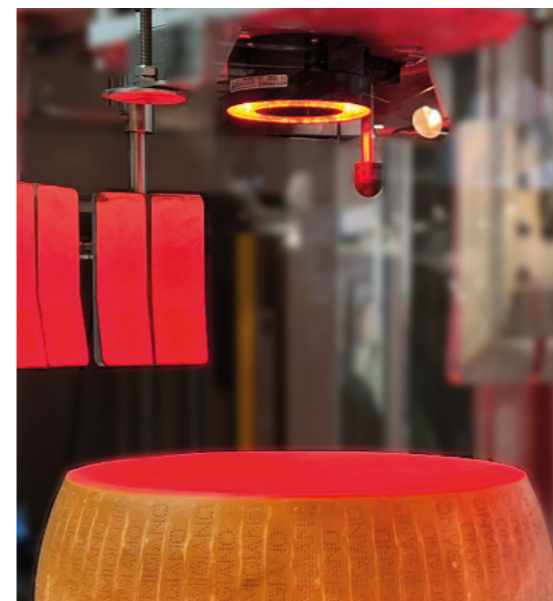
5 poles panel connector

DESIGN PROCESS

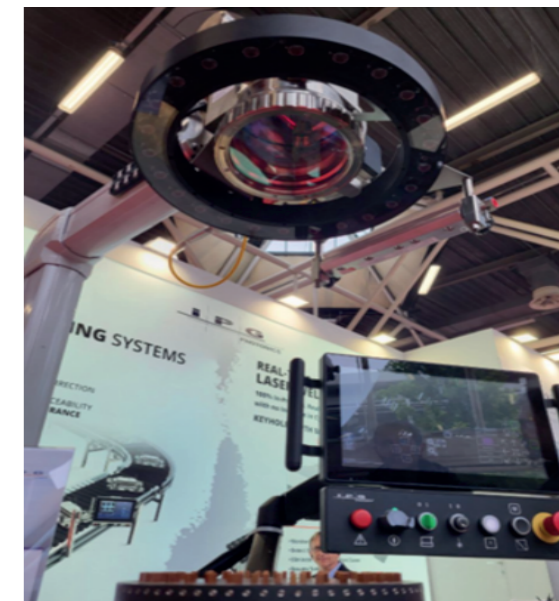


Create the perfect solution for your project with our technicians.
Email us at: info@genesi-lux.it

TAILOR-MADE APPLICATIONS



GEST122-625-T
FOOD & BEVERAGE
Cibus Tech, Parma



GEST365-625-L10-IPG
AUTOMOTIVE
E-TECH, Bologna



GEILD28-365-RGB
GERE3030-6K-850-OPC
LABELLING
Vision trade show, Stuttgart



GEVX115-6K-850
GEVX115-365
SORTING
Genesi's customer

ZERO ENVIRONMENTAL
IMPACT



Via Vignolese, 2605
41057 Spilamberto (MO)

Genesi's new headquarter for a sustainable future

is being built and completed by 2026

Sorting

Packaging

Food & Beverage

Pharma

Electronics

LED
Illuminators

Automotive

Tobacco

Labelling

Quality Control



Genesi Elettronica Srl
Via Bachelet, 3/A - 41057
Spilamberto - (Modena) - Italy
info@genesi-lux.it - Tel. +39 059785566



Organization with an
ISO 9001:2015 certified
Quality Management System



www.genesi-elettronica.com Follow us on:    

©All Rights Reserved Genesi Elettronica - 2024 Configuration Guide R4.0

